



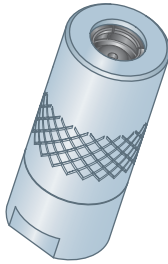
COUPLERS

CONVENTIONAL

Couplers are one of the most crucial components in lubricating your application. Hydraulic coupler jaws are heat treated and fully hardened spring steel to ensure a tight fit through extended use. The H84000 is our most popular coupler for general maintenance due to the narrow profile of the body and milled slots for easy tightening. Internal ball checks prevent back pressure from reaching the gun.

H84000

Hydraulic Coupler - Narrow
1/8"-27 NPT
3,000 psi

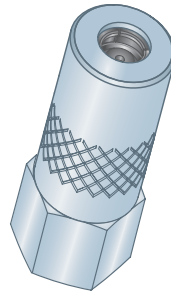


3,000 PSI

☺ 4 JAW CONSTRUCTION
✋ FOR HAND EQUIPMENT

H84030

Hydraulic Coupler - Narrow
1/8"-27 NPT
6,000 psi

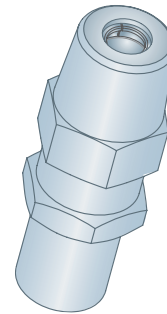


6,000 PSI

☺ 4 JAW CONSTRUCTION
✋ FOR HAND EQUIPMENT

H84075

Hydraulic Coupler - Narrow
1/8"-27 NPT
7,500 psi

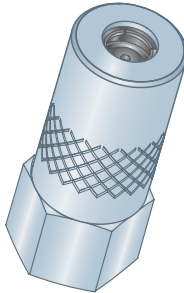


7,500 PSI

☺ 3 JAW CONSTRUCTION
🔑 FOR AIR/BATTERY EQUIP.

H84050

Hydraulic Coupler - Standard
1/8"-27 NPT
10,000 psi

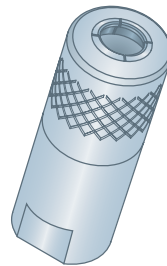


10,000 PSI

☺ 4 JAW CONSTRUCTION
🔑 FOR AIR/BATTERY EQUIP.

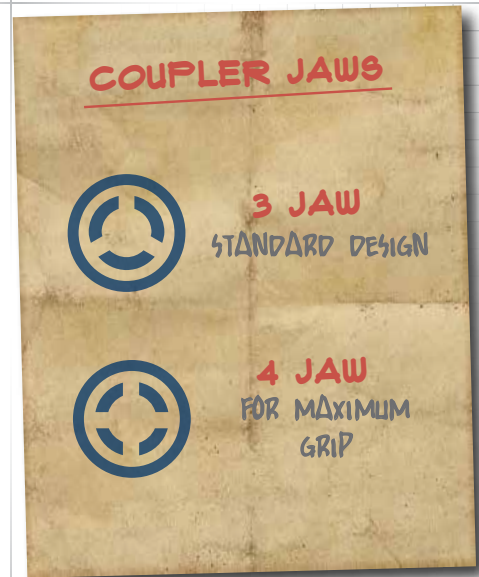
H84025Z3

Metric Hydraulic Coupler - Narrow
M10 x 1
5,000 psi

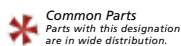


5,000 PSI

☺ 4 JAW CONSTRUCTION
✋ FOR HAND EQUIPMENT
⊘ NO BALL CHECK



Item #	Description	Jaws	Equipment Type	Thread	Working Pressure	Ball Check?
H84000	Hydraulic Coupler - Narrow	4 Jaw	Hand	1/8"-27 NPT	3,000 psi	Yes
H84030	Hydraulic Coupler - Narrow	4 Jaw	Hand	1/8"-27 NPT	6,000 psi	Yes
H84075	Hydraulic Coupler - Narrow	3 Jaw	Air / Battery	1/8"-27 NPT	7,500 psi	Yes
H84050	Hydraulic Coupler - Standard	4 Jaw	Air / Battery	1/8"-27 NPT	10,000 psi	Yes
H84025Z3	Hydraulic Coupler - Narrow	4 Jaw	Hand	M10 x 1.0	5,000 psi	No



Common Parts
Parts with this designation
are in wide distribution.



Alemite®
Alemite® is a registered trademark of
Alemite, LLC, Johnson City, TN, USA.



Lincoln Industrial®
Lincoln Industrial® is a registered trademark
of Lincoln Industrial (USA) Corp.



John Deere®
John Deere® is a registered trademark of
Deere and Company, Moline, Illinois.

All manufacturer names and numbers are for cross reference identification purposes only. In no way are we implying that our parts were made by the manufacturers listed. Prices, materials, dimensions, tolerances, designs and grades subject to change without notice. © G.L. Huyett 2019