

PARALLEL

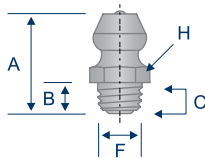
SAE J534

STAINLESS

Stainless steel fittings offer an additional level of corrosion resistance and are suited for food processing equipment, marine applications and sewage disposal systems. Parallel threads are often called special threads because they are not covered in SAE J534 (Please Note: The nipple design is covered by SAE J534). Parallel threaded fittings are not self-sealing like tapered threads, but do thread into standard screw-thread housings.

HI 792S

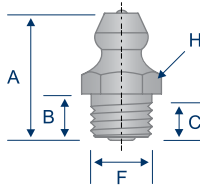
Straight - Stainless
1/4"-28 UNF
Short Shank



5577-9

HI 711S

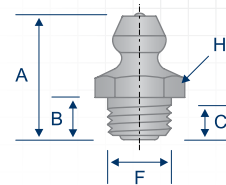
Straight - Stainless
5/16"-24 UNF
Standard Shank



AVAILABLE IN BRASS

HI 710S

Straight - Stainless
3/8"-24 UNF
Standard Shank



FOR MORE INFORMATION,
PLEASE SEE PG. 9

AVAILABLE IN BRASS

Item #	Thread	Angle (E)	Overall Length (A)	Shank Length (B)	Min. Thread Length (C)	Overall Width (D)	Thread Diameter (F)	Swing Clearance (G)	Hex (H)
H1792S	1/4"-28	Straight	.53"	.19"	.08"	—	.25"	—	9/32"
H1711S	5/16"-24	Straight	.66"	.22"	.12"	—	.31"	—	3/8"
H1710S	3/8"-24	Straight	.66"	.27"	.17"	—	.37"	—	7/16"

DRIVE TYPE

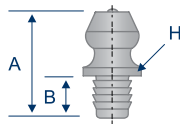
SAE J534

STAINLESS

Drive type fittings are advantageous because they do not need a threaded hole, therefore decreasing the cost of installation. See pages 30-31 for a detailed explanation on drive type fittings. Drill sizes provided are approximations and are for reference only. The exact drill size for drive fittings will vary with your application and material.

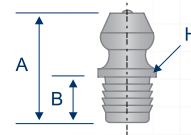
HI 728S

Straight Drive Type - Stainless
≈ 3/16" Drill Size
Long Shank


 1728-6
5033-9

HI 743S

Straight Drive Type - Stainless
≈ 1/4" Drill Size
Long Shank



FOR MORE INFORMATION,
PLEASE SEE PG. 30

Item #	Drill Diameter	Angle (E)	Overall Length (A)	Shank Length (B)	Overall Width (D)	Swing Clearance (G)	Shoulder Diameter (H)	Ball Check?
H1728S	≈ 3/16" Drill	Straight	.52"	.25"	—	—	5/16"	Yes
H1743S	≈ 1/4" Drill	Straight	.55"	.25"	—	—	11/32"	Yes

 Common Parts
Parts with this designation are in wide distribution.

 Alemite®
Alemite® is a registered trademark of Alemite, LLC, Johnson City, TN, USA.

 Lincoln Industrial®
Lincoln Industrial® is a registered trademark of Lincoln Industrial (USA) Corp.

 John Deere®
John Deere® is a registered trademark of Deere and Company, Moline, Illinois.

All manufacturer names and numbers are for cross reference identification purposes only. In no way are we implying that our parts were made by the manufacturers listed. Prices, materials, dimensions, tolerances, designs and grades subject to change without notice. © G.L. Huyett 2019