

1/8"-27 PTF

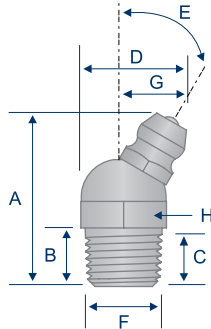
SAE J534

STAINLESS

All PTF type threads are variants of the Dryseal American Standard Taper Pipe Threads (NPTF), which are designed to provide a leak-proof seal without the use of a thread sealant. Visit our Thread Guide, pages 6-9, for more details.

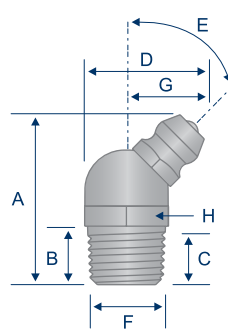
TECHNICAL DRAWINGS ARE APPROXIMATE ACTUAL SIZE

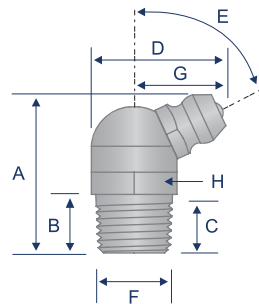
H1611S

 30° Angle - Stainless
 1/8"-27 PTF Spl. Short
 Standard Shank


A1921-S AVAILABLE IN MONEL®

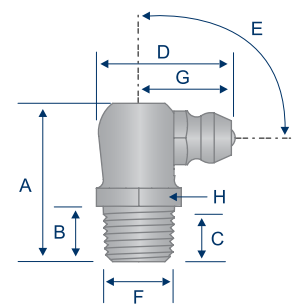
H1689S

 45° Angle - Stainless
 1/8"-27 PTF Spl. Short
 Standard Shank

H1612S

 65° Angle - Stainless
 1/8"-27 PTF Spl. Short
 Standard Shank


A1922-S AVAILABLE IN MONEL®

H1613S

 90° Angle - Stainless
 1/8"-27 PTF Spl. Short
 Standard Shank


A1923-S AVAILABLE IN MONEL®

| Item # | Thread | Angle (E) | Overall Length (A) | Shank Length (B) | Min. Thread Length (C) | Overall Width (D) | Thread Diameter (F) | Swing Clearance (G) | Hex (H) |
|--------|---------|-----------|--------------------|------------------|------------------------|-------------------|---------------------|---------------------|---------|
| H1611S | 1/8"-27 | 30° | .90" | .30" | .22" | .56" | .39" | .34" | 7/16" |
| H1689S | 1/8"-27 | 45° | .86" | .30" | .22" | .64" | .39" | .41" | 7/16" |
| H1612S | 1/8"-27 | 65° | .86" | .30" | .22" | .72" | .39" | .50" | 7/16" |
| H1613S | 1/8"-27 | 90° | .84" | .30" | .22" | .72" | .39" | .50" | 7/16" |

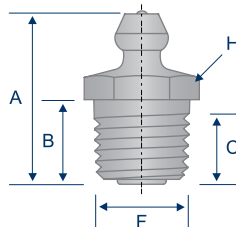
1/4"-18 PTF

SAE J534

STAINLESS

1/4"-18 PTF type fittings are for heavy-duty applications where smaller thread types may be less tolerant of heavy lubricants and extreme cold. Angle type fittings are available by special order.

H1627S

 Straight - Stainless
 1/4"-18 PTF Spl. Extra Short
 Standard Shank


| Item # | Thread | Angle (E) | Overall Length (A) | Shank Length (B) | Min. Thread Length (C) | Overall Width (D) | Thread Diameter (F) | Swing Clearance (G) | Hex (H) |
|--------|---------|-----------|--------------------|------------------|------------------------|-------------------|---------------------|---------------------|---------|
| H1627S | 1/4"-18 | Straight | .87" | .42" | .24" | — | .52" | — | 9/16" |

All manufacturer names and numbers are for cross reference identification purposes only. In no way are we implying that our parts were made by the manufacturers listed. Prices, materials, dimensions, tolerances, designs and grades subject to change without notice. © G.L. Huyett 2019