

M5 & M6 & M8

DIN 71412

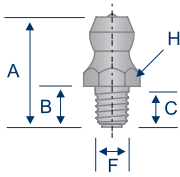
STAINLESS

Metric threads are the most popular thread type in the world. 6.0 mm threads are well suited for standard-duty use on cars, light trucks and some industrial machinery. 5.0 mm threads are better suited for light-duty uses. The coarse threads on the M8 x 1.25 are better suited for use with materials such as aluminum, because the threads are less likely to strip.

TECHNICAL DRAWINGS ARE APPROXIMATE ACTUAL SIZE

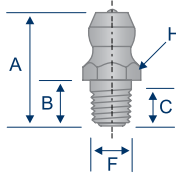
H21005

Straight - Stainless
M5 x 0.8 Taper Thread
Standard Shank



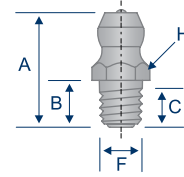
H21155

Straight - Stainless
M6 x 0.75 Taper Thread
Standard Shank



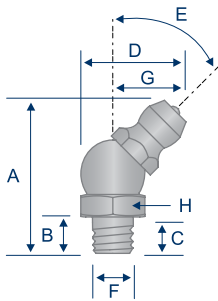
H21065

Straight - Stainless
M6 x 1.0 Taper Thread
Standard Shank



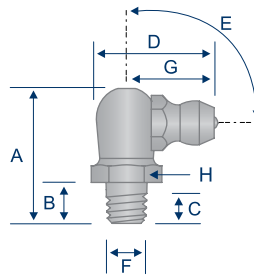
H21075

45° Angle - Stainless
M6 x 1.0 Taper Thread
Standard Shank



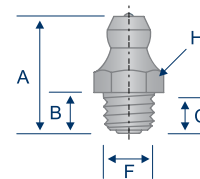
H21085

90° Angle - Stainless
M6 x 1.0 Taper Thread
Standard Shank

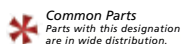


H21125

Straight - Stainless
M8 x 1.25 Taper Thread
Standard Shank



Item #	Thread	Angle (E)	Overall Length (A)	Shank Length (B)	Min. Thread Length (C)	Overall Width (D)	Thread Diameter (F)	Swing Clearance (G)	Hex (H)
H21005	M5 x 0.8	Straight	15.0 mm	5.5 mm	3.7 mm	—	5.0 mm	—	7.0 mm
H21155	M6 x 0.75	Straight	15.0 mm	5.5 mm	3.7 mm	—	6.0 mm	—	7.0 mm
H21065	M6 x 1.0	Straight	16.0 mm	5.5 mm	3.7 mm	—	6.0 mm	—	7.0 mm
H21075	M6 x 1.0	45°	21.0 mm	5.5 mm	3.7 mm	14.0 mm	6.0 mm	10.0 mm	9.0 mm
H21085	M6 x 1.0	90°	18.0 mm	5.5 mm	3.7 mm	18.0 mm	6.0 mm	14.0 mm	9.0 mm
H21125	M8 x 1.25	Straight	17.0 mm	5.5 mm	3.7 mm	—	8.0 mm	—	9.0 mm



Common Parts
Parts with this designation are in wide distribution.



Alemite®
Alemite® is a registered trademark of Alemite, LLC, Johnson City, TN, USA.



Lincoln Industrial®
Lincoln Industrial® is a registered trademark of Lincoln Industrial (USA) Corp.



John Deere®
John Deere® is a registered trademark of Deere and Company, Moline, Illinois.