

## 1/4"-28 SAE-LT

EXCEEDS 72 HR SALT SPRAY,  
8,000 PSI MAX PRESSURE.

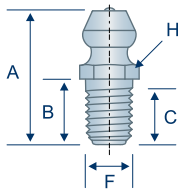
## SAE J534

Extended shank lengths are suited for deep seated bearings, or where materials are exceedingly thick. The extended shank allows for the placement of fittings into recessed areas. 1/4"-28 SAE-LT threads are also referred to as 1/4"-28 taper threads.

TECHNICAL DRAWINGS ARE APPROXIMATE ACTUAL SIZE

### H1652Z3

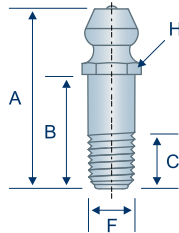
Straight  
1/4" Taper Thread  
Long Shank



1652-B  
 5013  
 JD7803  
\* AVAILABLE IN STAINLESS

### H1680Z3

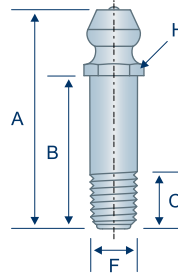
Straight  
1/4"-28 Taper Thread  
Extra Long Shank



1680-B  
 5014  
 JD7819  
\* AVAILABLE IN STAINLESS

### H1698Z3

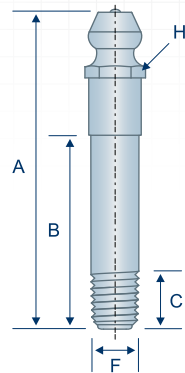
Straight  
1/4"-28 Taper Thread  
Super Long Shank



1698-B  
 JD7813

### H3014Z3

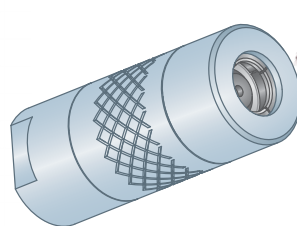
Straight  
1/4"-28 Taper Thread  
Ultra Long Shank



3014-B  
 JD5814

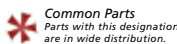
Item #	Thread	Angle (E)	Overall Length (A)	Shank Length (B)	Min. Thread Length (C)	Overall Width (D)	Thread Diameter (F)	Swing Clearance (G)	Hex (H)
H1652Z3	1/4"-28	Straight	.69"	.34"	.20"	—	.25"	—	5/16"
H1680Z3	1/4"-28	Straight	.92"	.60"	.25"	—	.25"	—	5/16"
H1698Z3	1/4"-28	Straight	1.12"	.81"	.20"	—	.25"	—	5/16"
H3014Z3	1/4"-28	Straight	1.64"	1.00"	.20"	—	.25"	—	5/16"

## CUSTOMERS ALSO BOUGHT



### COUPLERS

OUR COMPLETE LINE  
BEGINS ON PAGE 118



Common Parts  
Parts with this designation  
are in wide distribution.



Alemite®  
Alemite® is a registered trademark of  
Alemite, LLC, Johnson City, TN, USA.



Lincoln Industrial®  
Lincoln Industrial® is a registered trademark  
of Lincoln Industrial (USA) Corp.



John Deere®  
John Deere® is a registered trademark of  
Deere and Company, Moline, Illinois.

All manufacturer names and numbers are for cross reference identification purposes only. In no way are we implying that our parts were made by the manufacturers listed. Prices, materials, dimensions, tolerances, designs and grades subject to change without notice. © G.L. Huyett 2019