

M8 - POPULAR

EXCEEDS 72 HR SALT SPRAY.
8,000 PSI MAX PRESSURE.

DIN 71412

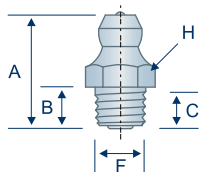
8.0 mm threads are commonly used in standard-duty applications, such as on cars and light trucks. Many thread sizes are available in extra-fine, fine, coarse and extra-coarse thread. Please visit our Thread Guide on pages 6-9 for more information on metric threads.

TECHNICAL DRAWINGS ARE APPROXIMATE ACTUAL SIZE

H2103Z3



Straight
M8 x 1.0 Taper Thread
Standard Shank

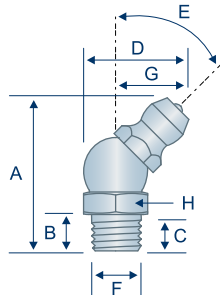


 2103  AVAILABLE IN STAINLESS
5178

H2104Z3



45° Angle
M8 x 1.0 Taper Thread
Standard Shank

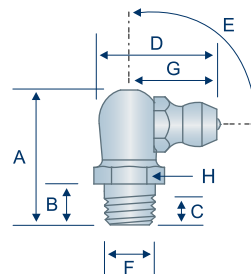


 5179  AVAILABLE IN STAINLESS

H2105Z3



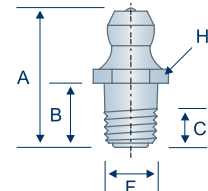
90° Angle
M8 x 1.0 Taper Thread
Standard Shank



 2105  AVAILABLE IN STAINLESS
5180

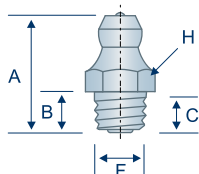
H2193Z3

Straight
M8 x 1.0 Taper Thread
Long Shank



H2112Z3

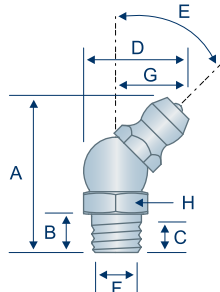
Straight
M8 x 1.25 Taper Thread
Standard Shank



 AVAILABLE IN STAINLESS

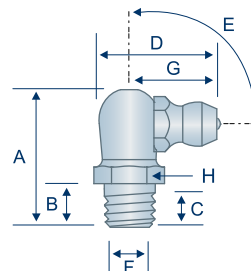
H2113Z3

45° Angle
M8 x 1.25 Taper Thread
Standard Shank



H2114Z3

90° Angle
M8 x 1.25 Taper Thread
Standard Shank




 AVAILABLE IN STAINLESS


SPECIAL PARTS

LOOKING FOR SOMETHING SPECIAL?

CALL THE G.L. HUYETT SALES TEAM, AND WE WILL MAKE YOUR PART TO YOUR SPECIFICATIONS!

Item #	Thread	Angle (E)	Overall Length (A)	Shank Length (B)	Min. Thread Length (C)	Overall Width (D)	Thread Diameter (F)	Swing Clearance (G)	Hex (H)
H2103Z3	 M8 x 1.0	Straight	16.0 mm	5.5 mm	3.7 mm	—	8.0 mm	—	9.0 mm
H2104Z3	 M8 x 1.0	45°	21.0 mm	5.5 mm	3.7 mm	14.0 mm	8.0 mm	9.8 mm	9.0 mm
H2105Z3	 M8 x 1.0	90°	18.0 mm	5.5 mm	3.7 mm	16.0 mm	8.0 mm	12.0 mm	9.0 mm
H2193Z3	M8 x 1.0	Straight	18.5 mm	8.5 mm	4.0 mm	—	8.0 mm	—	9.0 mm
H2112Z3	M8 x 1.25	Straight	17.0 mm	5.5 mm	3.7 mm	—	8.0 mm	—	9.0 mm
H2113Z3	M8 x 1.25	45°	21.0 mm	5.5 mm	3.7 mm	14.0 mm	8.0 mm	9.8 mm	9.0 mm
H2114Z3	M8 x 1.25	90°	18.0 mm	5.5 mm	3.7 mm	16.0 mm	8.0 mm	12.0 mm	9.0 mm

 Common Parts
Parts with this designation are in wide distribution.

 Alemite®
Alemite® is a registered trademark of Alemite, LLC, Johnson City, TN, USA.

 Lincoln Industrial®
Lincoln Industrial® is a registered trademark of Lincoln Industrial (USA) Corp.

 John Deere®
John Deere® is a registered trademark of Deere and Company, Moline, Illinois.

All manufacturer names and numbers are for cross reference identification purposes only. In no way are we implying that our parts were made by the manufacturers listed. Prices, materials, dimensions, tolerances, designs and grades subject to change without notice. © G.L. Huyett 2019