



BUTTON HEAD - STANDARD

EXCEEDS 72 HR SALT SPRAY.
8,000 PSI MAX PRESSURE.

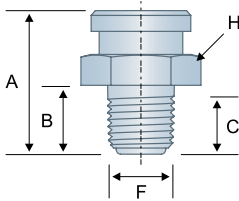
The large, flat head on button head fittings helps to minimize damage when used in harsh applications such as on heavy machinery and construction equipment. The plunger check design performs well under high back pressures and helps to reduce contamination and leakage.

FOR MORE INFORMATION,
PLEASE SEE PG. 38

TECHNICAL DRAWINGS ARE APPROXIMATE ACTUAL SIZE

A1184

Button Head- Standard
1/8"-27 PTF Spl. Short
Plunger Check

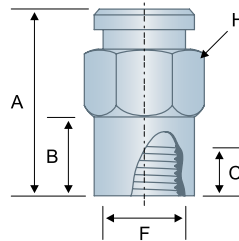


GM 191135

AVAILABLE IN STAINLESS

C69

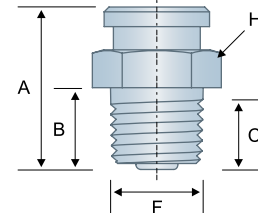
Button Head- Standard
1/8"-27 NPTF
Plunger Check



FEMALE THREADS

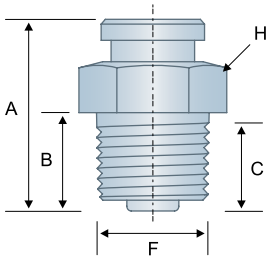
A1186

Button Head- Standard
1/4"-18 NPTF
Plunger Check



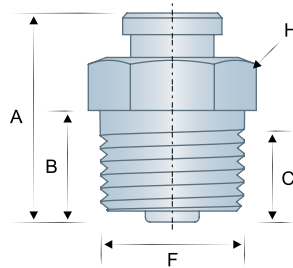
A1188

Button Head- Standard
3/8"-18 NPTF
Plunger Check



A1190

Button Head- Standard
1/2"-14 NPTF
Plunger Check



DESIGN FEATURE

ALEMITE® BUTTON HEAD FITTINGS ARE DESIGNED WITH A PLUNGER CHECK FOR RESISTANCE AGAINST HIGH BACK PRESSURES & TO ALLOW LARGE VOLUMES OF LUBRICATION TO FLOW INTO THE ASSEMBLY.

ALEMITE Item #	G.L. HUYETT Order #	Thread	Overall Length (A)	Shank Length (B)	Min. Thread Length (C)	Thread Diameter (F)	Hex (H)	Valve System
A1184	* A1184	1/8"-27	.75"	.34"	.22"	.39"	5/8"	Plunger Check
C69	AC69	1/8"-27	.97"	.41"	.28"	.39"	5/8"	Plunger Check
A1186	* A1186	1/4"-18	.83"	.42"	.40"	.52"	5/8"	Plunger Check
A1188	A1188	3/8"-18	.95"	.48"	.41"	.64"	3/4"	Plunger Check
A1190	A1190	1/2"-14	1.06"	.55"	.53"	.82"	7/8"	Plunger Check

* Common Parts
Parts with this designation
are in wide distribution.

GM General Motors®
General Motors® is a registered trademark
of General Motors Corp., Detroit, MI.

GM/CH General Motors®/CH
General Motors® is a registered trademark
of General Motors Corp., Detroit, MI.

F Ford®
Ford® is a registered trademark
of Ford Motor Company.

IH Case IH®
Case IH® is a registered trademark
of CNH America LLC, Racine, WI.

Prices, materials, dimensions, tolerances, designs and grades subject to change without notice. © G.L. Huyett 2019

Alemite® is a registered trademark of SKF Group Headquarters.
Monel® is a registered trademark of the Inco Alloys, International, Inc.

REVISED 03-19