

## 1/8"-27 PTF

EXCEEDS 72 HR SALT SPRAY,  
8,000 PSI MAX PRESSURE.

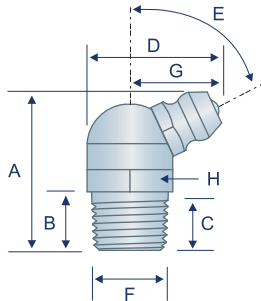
### SAE J534

TECHNICAL DRAWINGS ARE APPROXIMATE ACTUAL SIZE

1/8"-27 PTF fittings are used in heavy-duty commercial and industrial environments where limited access and possible overhead interference may cause accessibility issues. In this application and similar cases, fittings often require attention to orientation during installation.

### H1612Z3

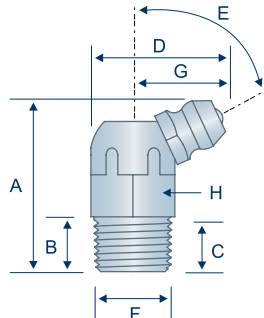
65° Angle  
1/8"-27 PTF Spl. Short  
Standard Shank



**A** 1612-B ✦ AVAILABLE IN STAINLESS  
**L** 5300 ✦ AVAILABLE IN MONEL®  
**J** 107760

### H369608

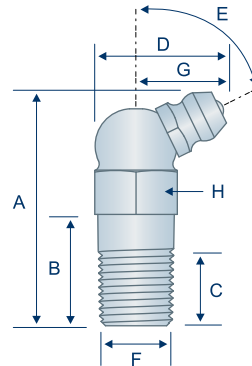
65° Angle  
1/8"-27 PTF Spl. Short  
Standard Shank



**A** 369608

### H1623Z3

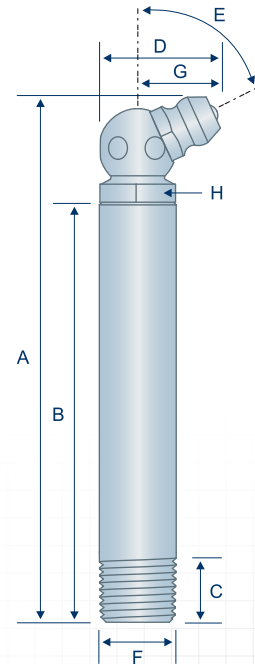
65° Angle  
1/8" PTF SAE Short  
Long Shank



**A** 1623-B  
**L** 5308

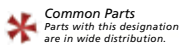
### H1649Z3

65° Angle  
1/8"-27 PTF Spl. Short  
Ultra Long Shank

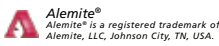


**A** 1649-B

Item #	Thread	Angle (E)	Overall Length (A)	Shank Length (B)	Min. Thread Length (C)	Overall Width (D)	Thread Diameter (F)	Swing Clearance (G)	Hex (H)
H1612Z3	1/8"-27	65°	.86"	.30"	.22"	.72"	.39"	.50"	7/16"
H369608	1/8"-27	65°	.91"	.28"	.19"	.73"	.39"	.51"	7/16"
H1623Z3	1/8"-27	65°	1.18"	.54"	.25"	.72"	.39"	.50"	7/16"
H1649Z3	1/8"-27	65°	2.76"	2.24"	.19"	.66"	.39"	.47"	3/8"



Common Parts  
Parts with this designation  
are in wide distribution.



Alemite®  
Alemite is a registered trademark of  
Alemite, LLC, Johnson City, TN, USA.



Lincoln Industrial®  
Lincoln Industrial is a registered trademark  
of Lincoln Industrial (USA) Corp.



John Deere®  
John Deere is a registered trademark of  
Deere and Company, Moline, Illinois.

All manufacturer names and numbers are for cross reference identification purposes only. In no way are we implying that our parts were made by the manufacturers listed. Prices, materials, dimensions, tolerances, designs and grades subject to change without notice. © G.L. Huyett 2019