

3/8"-18 PTF

EXCEEDS 72 HR SALT SPRAY,
8,000 PSI MAX PRESSURE

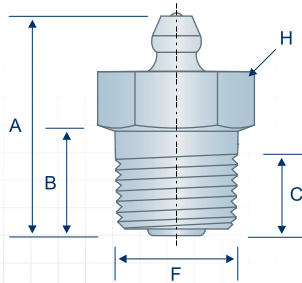
SAE J534

TECHNICAL DRAWINGS ARE APPROXIMATE ACTUAL SIZE

3/8"-18 PTF fittings, also known as 3/8" NPTF, which have 18 threads per inch, are typically used only in very heavy-duty applications, such as on rock crushers and mineral extraction equipment. In such applications, button head fittings are more often recommended due to their relative resistance to damage, see pages 42-45.

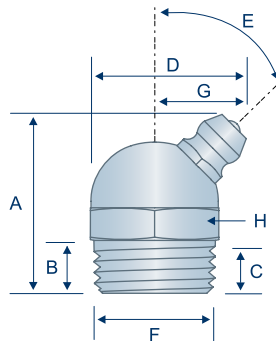
H1714Z3

Straight
3/8"-18 PTF Spl. Extra Short
Standard Shank



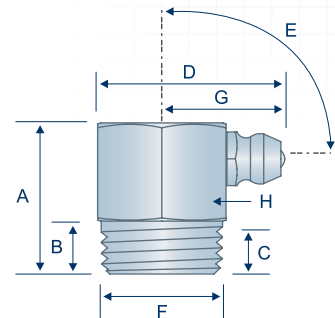
H1715Z3

45° Angle
3/8"-18 PTF Spl. Short
Standard Shank



H1716Z3

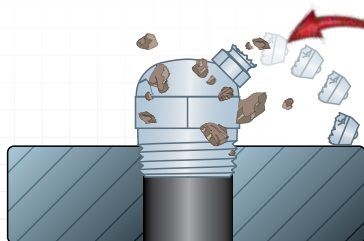
90° Angle
3/8"-18 PTF Spl. Short
Standard Shank



Item #	Thread	Angle (E)	Overall Length (A)	Shank Length (B)	Min. Thread Length (C)	Overall Width (D)	Thread Diameter (F)	Swing Clearance (G)	Hex (H)
H1714Z3	3/8"-18	Straight	.90"	.43"	.31"	—	.64"	—	3/4"
H1715Z3	3/8"-18	45°	1.00"	.28"	.22"	.87"	.64"	.53"	17.0 mm
H1716Z3	3/8"-18	90°	.79"	.30"	.22"	1.06"	.64"	.73"	17.0 mm

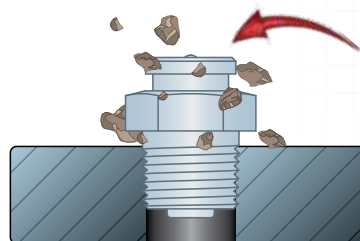
CONSIDER THIS...

CONVENTIONAL STYLE



DEBRIS CAN
DAMAGE NIPPLES IN
EXTREMELY HARSH
ENVIRONMENTS

BUTTON HEAD STYLE



USE A BUTTON HEAD
FITTING IN EXTREME
ENVIRONMENTS
WHERE THERE IS A
RISK OF DAMAGE,
SEE PAGES 42-45