

5/16" PARALLEL

EXCEEDS 72 HR SALT SPRAY.
8,000 PSI MAX PRESSURE.

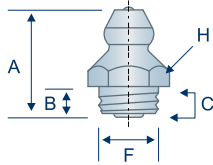
SAE J534

Extra fine threads, like those found on 5/16"-32 parallel threaded fittings, offer added thread engagement in thin materials. As with all parallel threads, thread sealant is recommended for a truly leak-free performance.

TECHNICAL DRAWINGS ARE APPROXIMATE ACTUAL SIZE

H1711Z3

Straight
5/16"-24 UNF
Short Shank

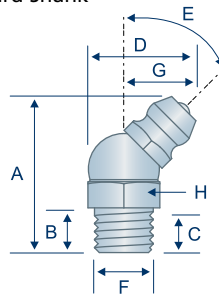


 1711-B

AVAILABLE IN STAINLESS
AVAILABLE IN BRASS

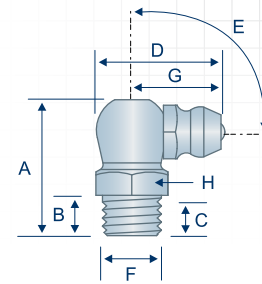
H1712Z3

45° Angle
5/16"-24 UNF
Standard Shank



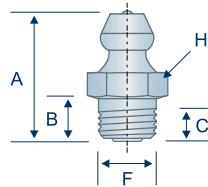
H1713Z3

90° Angle
5/16"-24 UNF
Standard Shank



H1631Z3

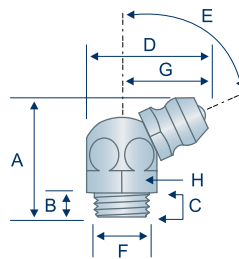
Straight
5/16"-32 UNEF
Standard Shank



 1631-B

H1648Z3

65° Angle
5/16"-32 UNEF
Short Shank



 1648-B1

PLEASE NOTE
THREAD SEALANT IS
RECOMMENDED FOR A TRULY
LEAK-FREE PERFORMANCE.

Item #	Thread	Angle (E)	Overall Length (A)	Shank Length (B)	Min. Thread Length (C)	Overall Width (D)	Thread Diameter (F)	Swing Clearance (G)	Hex (H)
H1711Z3	5/16"-24	Straight	.66"	.20"	.12"	—	.31"	—	3/8"
H1712Z3	5/16"-24	45°	.83"	.21"	.17"	.58"	.31"	.39"	3/8"
H1713Z3	5/16"-24	90°	.71"	.21"	.17"	.75"	.31"	.56"	3/8"
H1631Z3	5/16"-32	Straight	.66"	.22"	.17"	—	.31"	—	3/8"
H1648Z3	5/16"-32	65°	.63"	.13"	.11"	.70"	.31"	.52"	3/8"