

3/8" & 1/2" PARALLEL

EXCEEDS 72 HR SALT SPRAY,
8,000 PSI MAX PRESSURE.

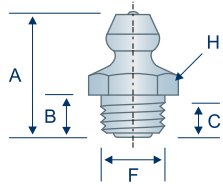
SAE J534

TECHNICAL DRAWINGS ARE APPROXIMATE ACTUAL SIZE

Large diameter parallel threaded fittings, though not as common as their taper threaded counterparts, are just as strong as taper threaded grease fittings. The parallel threads seat flush on the shoulder as a screw would, providing consistently installed heights.

H1710Z3

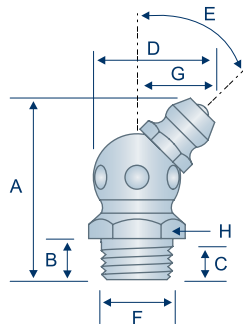
Straight
3/8"-24 UNF
Standard Shank



 AVAILABLE IN STAINLESS
 AVAILABLE IN BRASS

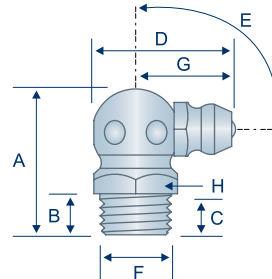
H1709Z3

45° Angle
3/8"-24 UNF
Standard Shank



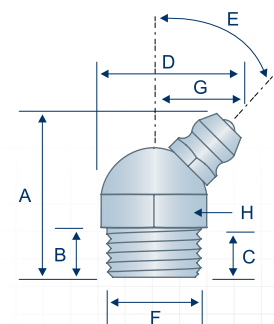
H1708Z3


90° Angle
3/8"-24 UNF
Standard Shank



H1740Z3

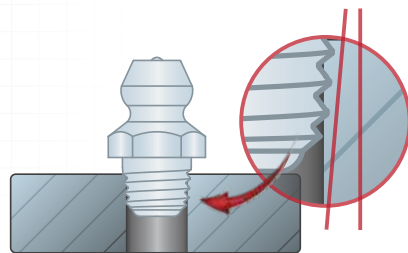
45° Angle
1/2"-20 UNF
Standard Shank



Item #	Thread	Angle (E)	Overall Length (A)	Shank Length (B)	Min. Thread Length (C)	Overall Width (D)	Thread Diameter (F)	Swing Clearance (G)	Hex (H)
H1710Z3	 3/8"-24	Straight	.64"	.24"	.14"	—	.37"	—	7/16"
H1709Z3	3/8"-24	45°	.98"	.22"	.15"	.67"	.37"	.45"	7/16"
H1708Z3	3/8"-24	90°	.79"	.22"	.15"	.76"	.37"	.55"	7/16"
H1740Z3	1/2"-20	45°	.89"	.26"	.15"	.75"	.49"	.47"	9/16"

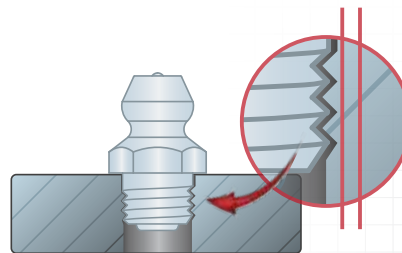
DESIGN FEATURE

TAPER THREADS





**TAPER THREADS RUN
DIAGONAL TO MATING MATERIAL**

PARALLEL THREADS



**PARALLEL THREADS RUN
PARALLEL TO MATING MATERIAL**

 Common Parts
Parts with this designation
are in wide distribution.

 Alemite®
Alemite® is a registered trademark of
Alemite, LLC, Johnson City, TN, USA.

 Lincoln Industrial®
Lincoln Industrial® is a registered trademark
of Lincoln Industrial (USA) Corp.

 John Deere®
John Deere® is a registered trademark of
Deere and Company, Moline, Illinois.

All manufacturer names and numbers are for cross reference identification purposes only. In no way are we implying that our parts were made by the manufacturers listed. Prices, materials, dimensions, tolerances, designs and grades subject to change without notice. © G.L. Huyett 2019