

THREAD FORMING

EXCEEDS 72 HR SALT SPRAY,
8,000 PSI MAX PRESSURE

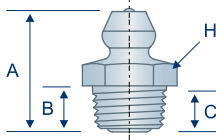
SAE J534

Installing thread forming fittings eliminates the time and cost associated with conventional tapping methods and forms stronger, cold worked threads in the process. Standard 1/8" -28 taper or 1/8" PTF fittings may be utilized when a fitting replacement is necessary.

TECHNICAL DRAWINGS ARE APPROXIMATE ACTUAL SIZE

HI 720Z3

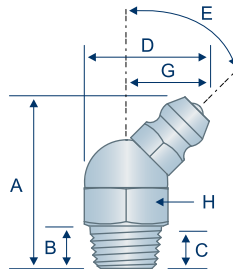
Straight
1/8" -27 Thread Forming
Standard Shank



1720-B
 205000
 JD7798

HI 724Z3

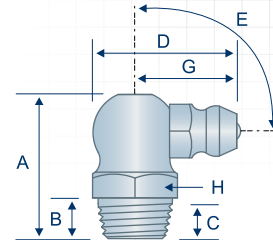
45° Angle
1/8" -27 Thread Forming
Standard Shank



1724-B
 205200
 JD7847

HI 723Z3

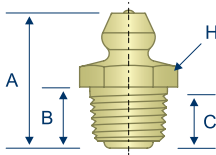
90° Angle
1/8" -27 Thread Forming
Standard Shank



1723-B
 205400
 JD7799

H369579

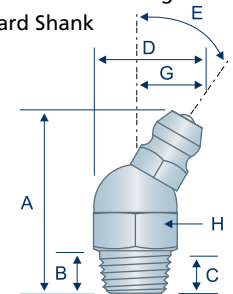
Straight
1/8" -27 Thread Forming
Long Shank



369579
 247235
 T162396

HI 721Z3

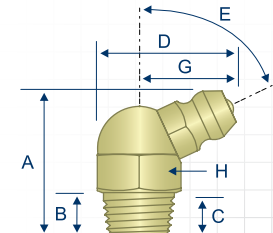
30° Angle
1/8" -27 Thread Forming
Standard Shank



JD7808

HI 722

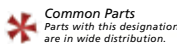
65° Angle
1/8" -27 Thread Forming
Standard Shank



1722-B

Item #	Thread	Angle (E)	Overall Length (A)	Shank Length (B)	Min. Thread Length (C)	Overall Width (D)	Swing Clearance (G)	Hex (H)
H1720Z3	1/8" -27	Straight	.62"	.24"	.14"	—	—	7/16"
H1724Z3	1/8" -27	45°	.92"	.20"	.14"	.62"	.40"	7/16"
H1723Z3	1/8" -27	90°	.76"	.20"	.14"	.72"	.50"	7/16"
H369579	1/8" -27	Straight	.70"	.32"	.21"	—	—	7/16"
H1721Z3	1/8" -27	30°	.91"	.19"	.14"	.56"	.34"	7/16"
H1722	1/8" -27	65°	.78"	.21"	.17"	.72"	.50"	7/16"

NOTE: 1/8" -27 APPROXIMATE HOLE SIZE 0.373-0.380"



All manufacturer names and numbers are for cross reference identification purposes only. In no way are we implying that our parts were made by the manufacturers listed. Prices, materials, dimensions, tolerances, designs and grades subject to change without notice. © G.L. Huyett 2019