

## RELIEF VENT

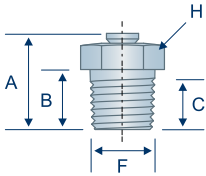
Pressure relief valves release excessive pressure which may accumulate during operation of a bearing housing or gearbox. Recommended installation is above fluid level. For a detailed explanation of the operation of pressure relief valves, see page 50-51. Available in stainless steel as a special order.

TECHNICAL DRAWINGS ARE APPROXIMATE ACTUAL SIZE

### ONE-PIECE DESIGN

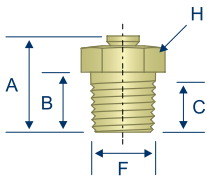
#### DIAGRAM 1

Relief - Top Vent  
1/8"-27 PTF Spl. Short  
One-Piece Design



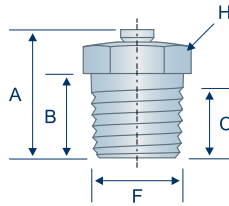
#### DIAGRAM 2

Relief - Top Vent  
1/8"-27 PTF Spl. Short  
One-Piece Design



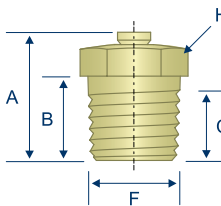
#### DIAGRAM 3

Relief - Top Vent  
1/4"-18 PTF Spl. Short  
One-Piece Design



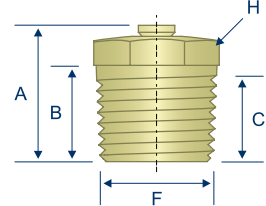
#### DIAGRAM 4

Relief - Top Vent  
1/4"-18 PTF Spl. Short  
One-Piece Design



#### DIAGRAM 5

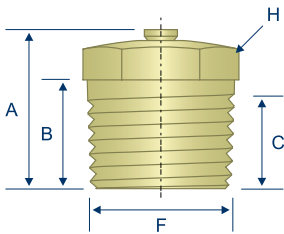
Relief - Top Vent  
3/8"-18 PTF Spl. Short  
One-Piece Design



### ONE-PIECE

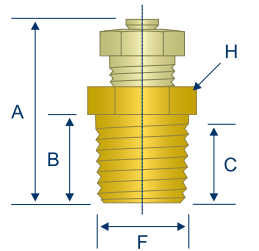
#### DIAGRAM 6

Relief - Top Vent  
1/2"-14 PTF Spl. Short  
One-Piece Design



#### DIAGRAM 7

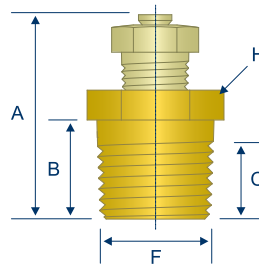
Relief - Top Vent  
1/4"-18 NPTF  
Two-Piece Design



★ BRASS BUSHING

#### DIAGRAM 8

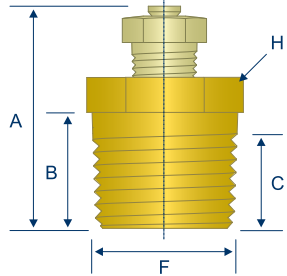
Relief - Top Vent  
3/8"-18 NPTF  
Two-Piece Design



★ BRASS BUSHING

#### DIAGRAM 9

Relief - Top Vent  
1/2"-14 NPTF  
Two-Piece Design



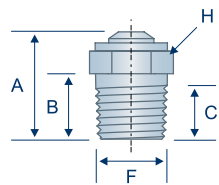
★ BRASS BUSHING

### TWO-PIECE DESIGN

### LEAK PROOF

#### DIAGRAM 10

Relief - Top Vent Leak Proof  
1/8"-27 PTF Spl. Short

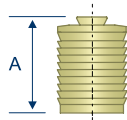


LEAK-PROOF RUBBER GASKET

### DRIVE TYPE

#### DIAGRAM 11

Relief - Top Vent Drive Type  
≈ 3/8" Drill Size

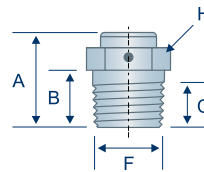


FOR AUTOMATIC INSTALLATION

### SIDE VENT

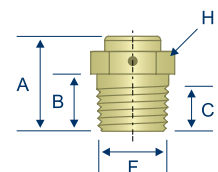
#### DIAGRAM 12

Relief - Side Vent  
1/8"-27 PTF Spl. Short



#### DIAGRAM 13

Relief - Side Vent  
1/8"-27 PTF Spl. Short



Common Parts  
Parts with this designation  
are in wide distribution.



Alemite®  
Alemite® is a registered trademark of  
Alemite, LLC, Johnson City, TN, USA.



Lincoln Industrial®  
Lincoln Industrial® is a registered trademark  
of Lincoln Industrial (USA) Corp.



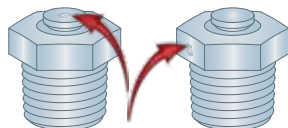
John Deere®  
John Deere® is a registered trademark of  
Deere and Company, Moline, Illinois.

## RELIEF VENT

TECHNICAL DRAWINGS ARE APPROXIMATE ACTUAL SIZE

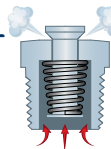
| Item #           | Diagram # | Thread       | Relief Pressure | Cross Reference |           | Overall Length (A) | Shank Length (B) | Min. Thread Length (C) | Thread Diameter (F) | Hex (H) |
|------------------|-----------|--------------|-----------------|-----------------|-----------|--------------------|------------------|------------------------|---------------------|---------|
| <b>ONE PIECE</b> |           |              |                 |                 |           |                    |                  |                        |                     |         |
| H317400Z3 *      | Dia. 1    | 1/8"-27 PTF  | 0.25-1 psi      | ▲ 317400        | ▲ AE38448 | .50"               | .30"             | .20"                   | .39"                | 7/16"   |
| H317402Z3        | Dia. 3    | 1/4"-18 PTF  | 0.25-1 psi      |                 |           | .67"               | .42"             | .27"                   | .52"                | 9/16"   |
| H47200Z3 *       | Dia. 1    | 1/8"-27 PTF  | 1-5 psi         | ▲ 47200         |           | .50"               | .30"             | .20"                   | .39"                | 7/16"   |
| H47202Z3 *       | Dia. 3    | 1/4"-18 PTF  | 1-5 psi         |                 |           | .67"               | .42"             | .27"                   | .52"                | 9/16"   |
| H47204           | Dia. 5    | 3/8"-18 PTF  | 1-5 psi         |                 |           | .71"               | .50"             | .34"                   | .64"                | 11/16"  |
| H47206           | Dia. 6    | 1/2"-14 PTF  | 1-5 psi         |                 |           | .83"               | .55"             | .39"                   | .82"                | 13/16"  |
| H321839Z3        | Dia. 11   | ≈ 3/8" Drill | 1-5 psi         | ▲ 321839        |           | .50"               | —                | —                      | —                   | —       |
| H47640Z3 *       | Dia. 1    | 1/8"-27 PTF  | 7.5-15 psi      | ▲ 47640         | ▲ R131795 | .50"               | .30"             | .20"                   | .39"                | 7/16"   |
| H47642           | Dia. 4    | 1/4"-18 PTF  | 7.5-15 psi      |                 |           | .67"               | .42"             | .27"                   | .52"                | 9/16"   |
| H323060Z3        | Dia. 1    | 1/8"-27 PTF  | 15-25 psi       | ▲ 323060        |           | .50"               | .30"             | .20"                   | .39"                | 7/16"   |
| H323062 *        | Dia. 4    | 1/4"-18 PTF  | 15-25 psi       |                 |           | .67"               | .42"             | .27"                   | .52"                | 9/16"   |
| H47100Z3         | Dia. 1    | 1/8"-27 PTF  | 45-80 psi       | ▲ 47100         |           | .50"               | .30"             | .20"                   | .39"                | 7/16"   |
| H47102Z3         | Dia. 3    | 1/4"-18 PTF  | 45-80 psi       |                 |           | .67"               | .42"             | .27"                   | .52"                | 9/16"   |
| H338382          | Dia. 10   | 1/8"-27 PTF  | 80-140 psi      | ▲ 338382        |           | .57"               | .34"             | .27"                   | .39"                | 7/16"   |
| H369593 *        | Dia. 2    | 1/8"-27 PTF  | 100-200 psi     | ▲ 369593        |           | .50"               | .30"             | .20"                   | .39"                | 7/16"   |
| H50500Z3         | Dia. 1    | 1/8"-27 PTF  | 400-650 psi     | ▲ 50500         |           | .50"               | .30"             | .20"                   | .39"                | 7/16"   |
| <b>TWO PIECE</b> |           |              |                 |                 |           |                    |                  |                        |                     |         |
| H317422          | Dia. 7    | 1/4"-18 NPTF | 0.25-1 psi      |                 |           | 1.06"              | .46"             | .39"                   | .52"                | 9/16"   |
| H317404          | Dia. 8    | 3/8"-18 NPTF | 0.25-1 psi      |                 |           | 1.06"              | .50"             | .39"                   | .64"                | 11/16"  |
| H317406          | Dia. 9    | 1/2"-14 NPTF | 0.25-1 psi      |                 |           | 1.16"              | .55"             | .42"                   | .82"                | 13/16"  |
| H47222           | Dia. 7    | 1/4"-18 NPTF | 1-5 psi         |                 |           | 1.06"              | .46"             | .39"                   | .52"                | 9/16"   |
| H47224           | Dia. 8    | 3/8"-18 NPTF | 1-5 psi         |                 |           | 1.06"              | .50"             | .39"                   | .64"                | 11/16"  |
| H47226           | Dia. 9    | 1/2"-14 NPTF | 1-5 psi         |                 |           | 1.16"              | .55"             | .42"                   | .82"                | 13/16"  |
| H47622           | Dia. 7    | 1/4"-18 NPTF | 7.5-15 psi      |                 |           | 1.06"              | .46"             | .39"                   | .52"                | 9/16"   |
| H47644           | Dia. 8    | 3/8"-18 NPTF | 7.5-15 psi      |                 |           | 1.06"              | .50"             | .39"                   | .64"                | 11/16"  |
| H47646           | Dia. 9    | 1/2"-14 NPTF | 7.5-15 psi      |                 |           | 1.16"              | .55"             | .42"                   | .82"                | 13/16"  |
| H323262          | Dia. 7    | 1/4"-18 NPTF | 15-25 psi       |                 |           | 1.06"              | .46"             | .39"                   | .52"                | 9/16"   |
| H323064          | Dia. 8    | 3/8"-18 NPTF | 15-25 psi       |                 |           | 1.06"              | .50"             | .39"                   | .64"                | 11/16"  |
| H323066          | Dia. 9    | 1/2"-14 NPTF | 15-25 psi       |                 |           | 1.16"              | .55"             | .42"                   | .82"                | 13/16"  |
| H47122           | Dia. 7    | 1/4"-18 NPTF | 45-80 psi       |                 |           | 1.06"              | .46"             | .39"                   | .52"                | 9/16"   |
| H47104           | Dia. 8    | 3/8"-18 NPTF | 45-80 psi       |                 |           | 1.06"              | .50"             | .39"                   | .64"                | 11/16"  |
| H47106           | Dia. 9    | 1/2"-14 NPTF | 45-80 psi       |                 |           | 1.16"              | .55"             | .42"                   | .82"                | 13/16"  |
| <b>SIDE VENT</b> |           |              |                 |                 |           |                    |                  |                        |                     |         |
| H5677Z3 *        | Dia. 12   | 1/8"-27 PTF  | 1-5 psi         | ▲ 5677          | ▲ E14814  | .50"               | .28"             | .17"                   | .39"                | 7/16"   |
| H5678Z3 *        | Dia. 12   | 1/8"-27 PTF  | 7.5-15 psi      | ▲ 5678          |           | .50"               | .28"             | .17"                   | .39"                | 7/16"   |
| H5679            | Dia. 13   | 1/8"-27 PTF  | 15-25 psi       | ▲ 5679          |           | .50"               | .28"             | .17"                   | .39"                | 7/16"   |
| H5680            | Dia. 13   | 1/8"-27 PTF  | 45-80 psi       | ▲ 5680          |           | .50"               | .28"             | .17"                   | .39"                | 7/16"   |

THE UPPER PRESSURE RANGE LIMIT IS MARKED ON THE TOP OR SIDE OF THE FITTING.

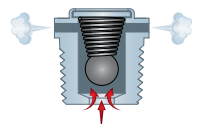


SIDE VENT FITTINGS RELEASE PRESSURE THROUGH TWO SIDE PORTS, WHEREAS TOP VENT FITTINGS RELEASE PRESSURE THROUGH A LARGE TOP PORT.

TOP VENT



SIDE VENT



All manufacturer names and numbers are for cross reference identification purposes only. In no way are we implying that our parts were made by the manufacturers listed. Prices, materials, dimensions, tolerances, designs and grades subject to change without notice. © G.L. Huyett 2019