

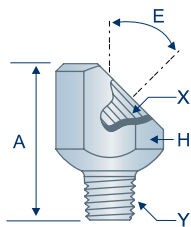
ADAPTERS- ANGLED

MALE × FEMALE

Angled adapters are often implemented in applications where a thread size needs to be changed to accompany a mating part. This is generally done to accommodate common thread sizes, retrofit aftermarket parts to an existing assembly or allow for the tapping of larger threads to replace a damaged part. Also, adapters are sometimes used to remote mount lubrication points with a flex hose.

H310912

45° Angle Adapter
Female (X) - 1/8"-27 NPTF
Male (Y) - 1/4"-28 SAE-LT

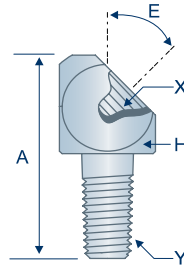


 310912

WITH
WRENCHING
FLATS

H247616

45° Angle Adapter
Female (X) - 1/8"-27 PTF SAE Short
Male (Y) - 1/4"-28 SAE-LT

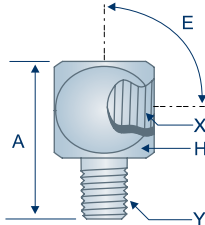


 247616

SPECIAL PARTS
DON'T SEE WHAT YOU NEED?
OUR IN-HOUSE MACHINE SHOP
CAN MAKE YOUR CUSTOM PART.
CALL OUR SALES TEAM TODAY
FOR MORE INFORMATION!

H51943

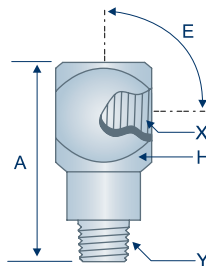
90° Angle Adapter
Female (X) - 1/8"-27 NPTF
Male (Y) - 1/4"-28 SAE-LT



 20026
 JD7845

HA51943Z3

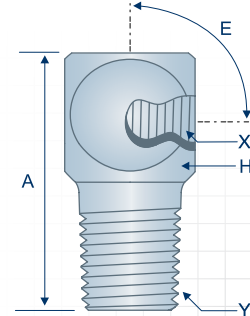
90° Angle Adapter
Female (X) - 1/8"-27 NPTF
Male (Y) - 1/4"-28 SAE-LT



 51943


H43718

90° Angle Adapter
Female (X) - 1/8"-18 NPTF
Male (Y) - 1/4"-18 PTF SAE Short



 43718

Item #	Male Thread (Y)	Female Thread (X)	Angle (E)	Overall Length (A)	Hex (H)
H310912	1/4"-28 SAE-LT (M)	1/8"-27 NPTF (F)	45°	.81"	1/2"
H247616	1/4"-28 SAE-LT (M)	1/8"-27 PTF SAE Short (F)	45°	1.06"	1/2" sq.
H51943 *	1/4"-28 SAE-LT (M)	1/8"-27 NPTF (F)	90°	.81"	1/2" sq.
HA51943Z3	1/4"-28 SAE-LT (M)	1/8"-27 NPTF (F)	90°	1.04"	1/2" sq.
H43718 *	1/4"-18 PTF SAE Short (M)	1/8"-27 NPTF (F)	90°	1.19"	9/16" sq.

 Common Parts
Parts with this designation are in wide distribution.

 Alemite®
Alemite® is a registered trademark of Alemite, LLC, Johnson City, TN, USA.

 Lincoln Industrial®
Lincoln Industrial® is a registered trademark of Lincoln Industrial (USA) Corp.

 John Deere®
John Deere® is a registered trademark of Deere and Company, Moline, Illinois.

All manufacturer names and numbers are for cross reference identification purposes only. In no way are we implying that our parts were made by the manufacturers listed. Prices, materials, dimensions, tolerances, designs and grades subject to change without notice. © G.L. Huyett 2019

TECHNICAL DRAWINGS ARE APPROXIMATE ACTUAL SIZE