

MACHINE KEYS

HUYETT.COM • 785-392-3017

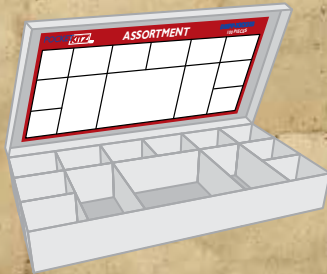
BOX 232 • MINNEAPOLIS, KS • 67467
SALES@HUYETT.COM • FAX 785-392-2845

ASSORTMENTS

POCKETKITZ™

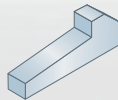
Choose one of our assortments or call for your own customized assortment.

- Use assortments for:
- Easy bin stocking
 - POS displays
 - Sampling opportunities
 - Special promotions
 - Specific applications
 - Maintenance kits



Gib Head Key Imperial DISP-GHK060

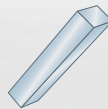
60 Pieces
Cold Finished Steel,
Zinc Clear Trivalent



Parts Included	Size	Qty
GIB-0375-1000ZC	3/8" x 1"	5
GIB-0375-2000ZC	3/8" x 2"	5
GIB-0500-1000ZC	1/2" x 1"	5
GIB-0250-1000ZC	1/4" x 1"	5
GIB-0500-1500ZC	1/2" x 1-1/2"	5
GIB-0250-2000ZC	1/4" x 2"	5
GIB-0312-1000ZC	5/16" x 1"	5
GIB-0312-2000ZC	5/16" x 2"	5
GIB-0250-1500ZC	1/4" x 1-1/2"	5
GIB-0312-1500ZC	5/16" x 1-1/2"	5
GIB-0500-2000ZC	1/2" x 2"	5
GIB-0375-1500ZC	3/8" x 1-1/2"	5

Machine Key Imperial DISP-MK070

70 Pieces, Form B
Cold Finished Steel,
Zinc Clear Trivalent



Parts Included	Size	Qty
3101250125-1500	1/8" x 1/8" x 1-1/2"	20
3101870187-1500	3/16" x 3/16" x 1-1/2"	12
3101870250-1500	3/16" x 1/4" x 1-1/2"	12
3102500250-1500	1/4" x 1/4" x 1-1/2"	10
3103120312-1500	5/16" x 5/16" x 1-1/2"	8
3103750375-1500	3/8" x 3/8" x 1-1/2"	8



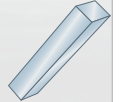
LOOKING FOR A
CUSTOM ASSORTMENT?

WE'LL WORK WITH YOU
TO DEVELOP, PACKAGE,
AND LABEL PARTS WITH
YOUR BRAND



Machine Key Imperial DISP-MK300

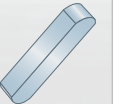
300 Pieces, Form B
Cold Finished Steel,
Zinc Clear Trivalent



Parts Included	Size	Qty
3101250125-0750	1/8" x 1/8" x 3/4"	25
3101250125-1000	1/8" x 1/8" x 1"	25
3101870187-0750	3/16" x 3/16" x 3/4"	25
3101870187-1000	3/16" x 3/16" x 1"	25
3101870187-1250	3/16" x 3/16" x 1-1/4"	25
3101870187-1500	3/16" x 3/16" x 1-1/2"	25
3102500250-0750	1/4" x 1/4" x 3/4"	25
3102500250-1000	1/4" x 1/4" x 1"	25
3102500250-1250	1/4" x 1/4" x 1-1/4"	25
3102500250-1500	1/4" x 1/4" x 1-1/2"	25
3103120312-1250	5/16" x 5/16" x 1-1/4"	25
3103120312-1500	5/16" x 5/16" x 1-1/2"	25

Machine Key Metric DISP-MKM025

25 Pieces, Form A
Cold Finished Steel,
Zinc Clear Trivalent



Parts Included	Size	Qty
32Z0404-080	4 mm x 4 mm x 80 mm	2
32Z0505-080	5 mm x 5 mm x 80 mm	3
32Z0606-080	6 mm x 6 mm x 80 mm	2
32Z0707-080	7 mm x 7 mm x 80 mm	2
32Z0807-080	8 mm x 7 mm x 80 mm	2
32Z0808-080	8 mm x 8 mm x 80 mm	3
32Z1008-080	10 mm x 8 mm x 80 mm	2
32Z1010-080	10 mm x 10 mm x 80 mm	2
32Z1208-080	12 mm x 8 mm x 80 mm	2
32Z1212-080	12 mm x 12 mm x 80 mm	2
32Z1610-080	16 mm x 10 mm x 80 mm	1
32Z1811-080	18 mm x 11 mm x 80 mm	1
32Z2012-080	20 mm x 12 mm x 80 mm	1

Machine Key Metric DISP-MKM058

58 Pieces, Form A
Cold Finished Steel,
Zinc Clear Trivalent



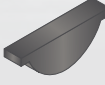
Parts Included	Size	Qty
32Z0404-040	4 mm x 4 mm x 40 mm	8
32Z0505-040	5 mm x 5 mm x 40 mm	8
32Z0606-040	6 mm x 6 mm x 40 mm	10
32Z0807-040	8 mm x 7 mm x 40 mm	4
32Z0808-040	8 mm x 8 mm x 40 mm	10
32Z1008-040	10 mm x 8 mm x 40 mm	4
32Z1010-040	10 mm x 10 mm x 40 mm	4
32Z1212-040	12 mm x 12 mm x 40 mm	4
32Z1409-040	14 mm x 9 mm x 40 mm	4
32Z1610-040	16 mm x 10 mm x 40 mm	2

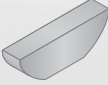
FOR DETAILED SPECIFICATIONS AND TOLERANCES, VISIT HUYETT.COM.

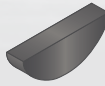
Prices, materials, dimensions, tolerances, designs, and grades subject to change without notice. © 2016 G.L. Huyett



ASSORTMENTS

Hi-Pro Key Imperial DISP-HPK120		
60 Pieces Cold Finished Steel, Plain*		
		
Parts Included	Size	Qty
HIPRO-606	3/16" x 3/4"	10
HIPRO-706	3/16" x 7/8"	10
HIPRO-504	1/8" x 5/8"	10
HIPRO-503	3/32" x 5/8"	10
HIPRO-505	5/32" x 5/8"	10
HIPRO-403	3/32" x 1/2"	10
HIPRO-404	1/8" x 1/2"	10
HIPRO-402	1/16" x 1/2"	10
HIPRO-605	5/32" x 3/4"	10
HIPRO-708	1/4" x 7/8"	10
HIPRO-808	1/4" x 1"	10
HIPRO-604	1/8" x 3/4"	10

Woodruff Key Imperial DISP-WKS060		
60 Pieces Stainless Steel, Plain		
		
Parts Included	Size	Qty
WKS-002	3/32" x 1/2"	8
WKS-003	1/8" x 1/2"	8
WKS-005	1/8" x 5/8"	5
WKS-006	5/32" x 5/8"	5
WKS-007	1/8" x 3/4"	5
WKS-009	3/16" x 3/4"	4
WKS-00A	1/4" x 7/8"	2
WKS-011	3/16" x 7/8"	2
WKS-015	1/4" x 1"	2
WKS-061	3/16" x 5/8"	5
WKS-091	1/4" x 3/4"	4
WKS-212	3/32" x 3/8"	10

Woodruff Key Imperial DISP-WKC250		
250 Pieces Cold Finished Steel, Plain*		
		
Parts Included	Size	Qty
WKC-001	1/16" x 1/2"	10
WKC-002	3/32" x 1/2"	20
WKC-003	1/8" x 1/2"	20
WKC-004	3/32" x 5/8"	10
WKC-005	1/8" x 5/8"	30
WKC-006	5/32" x 5/8"	40
WKC-007	1/8" x 3/4"	20
WKC-008	5/32" x 3/4"	10
WKC-009	3/16" x 3/4"	20
WKC-00A	1/4" x 7/8"	5
WKC-010	5/32" x 7/8"	5
WKC-011	3/16" x 7/8"	5
WKC-012	7/32" x 7/8"	5
WKC-061	3/16" x 5/8"	5
WKC-091	1/4" x 3/4"	5
WKC-211	1/16" x 3/8"	10
WKC-212	3/32" x 3/8"	20
WKC-213	1/8" x 3/8"	10

Woodruff Key Metric DISP-WKMC350		
350 Pieces Cold Finished Steel, Plain*		
		
Parts Included	Size	Qty
WKMC-015026	1.5 mm x 2.6 mm	25
WKMC-020026	2 mm x 2.6 mm	25
WKMC-020050	2 mm x 5 mm	25
WKMC-025037	2.5 mm x 3.7 mm	25
WKMC-030037	3 mm x 3.7 mm	25
WKMC-030065	3 mm x 6.5 mm	25
WKMC-040050	4 mm x 5 mm	25
WKMC-040075	4 mm x 7.5 mm	25
WKMC-050075	5 mm x 7.5 mm	20
WKMC-050090	5 mm x 9 mm	20
WKMC-050100	5 mm x 10 mm	15
WKMC-060075	6 mm x 7.5 mm	15
WKMC-060090	6 mm x 9 mm	15
WKMC-060110	6 mm x 11 mm	15
WKMC-080110	8 mm x 11 mm	15
WKMC-080130	8 mm x 13 mm	15
WKMC-100130	10 mm x 13 mm	10
WKMC-100160	10 mm x 16 mm	10

ENVIRONMENTAL CONCERNS

G.L. Huyett is committed to maintaining the safety of our environment. The processes for plating and coating steels have the potential of introducing harmful chemical substances into the environment and are strictly controlled. G.L. Huyett complies with all environmental regulations and laws which apply to our products and services.

Learn more at huyett.com/quality.



REACH
Registration,
Evaluation,
Authorization,
and Restriction
of Chemical
Substances



RoHS
Restriction of
Hazardous
Substances

FOR DETAILED SPECIFICATIONS AND TOLERANCES, VISIT HUYETT.COM.

Prices, materials, dimensions, tolerances, designs, and grades subject to change without notice. © 2016 G.L. Huyett

*Limited warranty for surface finish: 30 days from date of shipment. See page 12 for details.

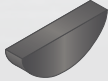
MACHINE KEYS

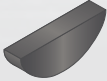
HUYETT.COM • 785-392-3017

BOX 232 • MINNEAPOLIS, KS • 67467

SALES@HUYETT.COM • FAX 785-392-2845

ASSORTMENTS

Woodruff Key Imperial DISP-WKC100		100 Pieces Cold Finished Steel, Plain*	
Parts Included	Size	Qty	
WKC-001	1/16" x 1/2"	3	
WKC-002	3/32" x 1/2"	3	
WKC-003	1/8" x 1/2"	5	
WKC-004	3/32" x 5/8"	3	
WKC-005	1/8" x 5/8"	3	
WKC-006	5/32" x 5/8"	5	
WKC-007	1/8" x 3/4"	5	
WKC-008	5/32" x 3/4"	3	
WKC-009	3/16" x 3/4"	13	
WKC-00A	1/4" x 7/8"	9	
WKC-00B	5/16" x 1"	2	
WKC-00D	5/16" x 1-1/4"	1	
WKC-00E	3/8" x 1-1/4"	1	
WKC-00F	3/8" x 1-3/8"	1	
WKC-00G	3/8" x 1-1/2"	1	
WKC-010	5/32" x 7/8"	3	
WKC-011	3/16" x 7/8"	10	
WKC-012	7/32" x 7/8"	2	
WKC-013	3/16" x 1"	2	
WKC-014	7/32" x 1"	1	
WKC-015	1/4" x 1"	2	
WKC-016	3/16" x 1-1/8"	1	
WKC-017	7/32" x 1-1/8"	1	
WKC-018	1/4" x 1-1/8"	1	
WKC-019	3/16" x 1-1/4"	1	
WKC-020	7/32" x 1-1/4"	1	
WKC-021	1/4" x 1-1/4"	1	
WKC-022	1/4" x 1-3/8"	1	
WKC-023	5/16" x 1-3/8"	1	
WKC-024	1/4" x 1-1/2"	1	
WKC-025	5/16" x 1-1/2"	1	
WKC-091	1/4" x 3/4"	3	
WKC-ORX	1/4" x 2-3/4"	1	
WKC-OTX	3/8" x 2-3/4"	1	
WKC-0VX	1/2" x 2-3/4"	1	
WKC-126	3/16" x 2-1/8"	1	
WKC-127	1/4" x 2-1/8"	1	
WKC-128	5/16" x 2-1/8"	1	
WKC-129	3/8" x 2-1/8"	1	
WKC-152	3/8" x 1"	2	

Woodruff Key Imperial DISP-WKC350		350 Pieces Cold Finished Steel, Plain*	
Parts Included	Size	Qty	
WKC-001	1/16" x 1/2"	10	
WKC-002	3/32" x 1/2"	20	
WKC-003	1/8" x 1/2"	20	
WKC-004	3/32" x 5/8"	20	
WKC-005	1/8" x 5/8"	30	
WKC-006	5/32" x 5/8"	40	
WKC-007	1/8" x 3/4"	10	
WKC-008	5/32" x 3/4"	20	
WKC-009	3/16" x 3/4"	20	
WKC-00A	1/4" x 7/8"	10	
WKC-00B	5/16" x 1"	5	
WKC-00C	5/16" x 1-1/8"	5	
WKC-00D	5/16" x 1-1/4"	5	
WKC-00E	3/8" x 1-1/4"	5	
WKC-00F	3/8" x 1-3/8"	3	
WKC-00G	3/8" x 1-1/2"	3	
WKC-010	5/32" x 7/8"	5	
WKC-011	3/16" x 7/8"	5	
WKC-012	7/32" x 7/8"	5	
WKC-015	1/4" x 1"	5	
WKC-018	1/4" x 1-1/8"	5	
WKC-020	7/32" x 1-1/4"	5	
WKC-021	1/4" x 1-1/4"	5	
WKC-022	1/4" x 1-3/8"	5	
WKC-023	5/16" x 1-3/8"	5	
WKC-024	1/4" x 1-1/2"	3	
WKC-025	5/16" x 1-1/2"	3	
WKC-026	3/16" x 2-1/8"	3	
WKC-028	5/16" x 2-1/8"	3	
WKC-061	3/16" x 5/8"	15	
WKC-091	1/4" x 3/4"	10	
WKC-126	3/16" x 2-1/8"	3	
WKC-128	5/16" x 2-1/8"	3	
WKC-211	1/16" x 3/8"	10	
WKC-212	3/32" x 3/8"	20	
WKC-213	1/8" x 3/8"	10	
WKC-127	1/4" x 2-1/8"	1	
WKC-128	5/16" x 2-1/8"	1	
WKC-129	3/8" x 2-1/8"	1	
WKC-152	3/8" x 1"	2	

PROUD DISTRIBUTORS OF:



Retaining Rings, Circlips,
Hose Clamps, Spiral
Rings, Constant Section
Rings, & Wave Springs



Coiled Spring Pins,
Slotted Spring Pins,
Spacers, & Thrust
Washers



Bridge Pins, Cotter Pins,
Hitch Pins, Shafting, Shaft
Collars, & Grease Fittings



Spring Washers, Wave
Washers, & Belleville
Washers



Speed Nuts, Expansion
Nuts, U-nuts, Self-thread
Lock Nuts, Trim & Panel
Clips, Palnut Push-ons,
& Nut / Bolt Assemblies



Connecting & Mounting
Clamps, Quick
Connectors, Rings,
Straps, & Tools



Threaded Inserts, Studs,
Rivets, & Tools



Clevis Pins,
Lanyards, & Helical Spring
Lock Washers

FOR DETAILED SPECIFICATIONS AND TOLERANCES, VISIT HUYETT.COM.

Prices, materials, dimensions, tolerances, designs, and grades subject to change without notice. © 2016 G.L. Huyett

*Limited warranty for surface finish: 30 days from date of shipment. See page 12 for details.