

# SHIMS & SPACERS

HUYETT.COM • 785-392-3017

BOX 232 • MINNEAPOLIS, KS • 67467  
SALES@HUYETT.COM • FAX 785-392-2845

## SHIM WASHER



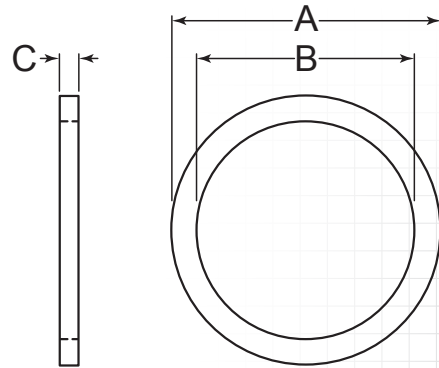
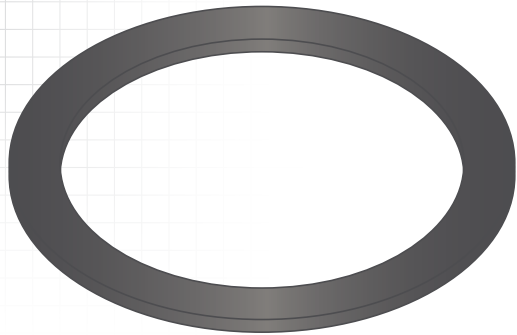
DIN 988

### DESCRIPTION

Frequently used with retaining rings or lock washers, shim washers prevent axial movement by taking up play between machine components. To ensure they retain their shape under excessive forces, the contact faces of the shim and component must be smooth and of similar hardness to avoid excessive wear.

### HOW TO IDENTIFY

1. Measure inside diameter (B).
2. Measure thickness (C).
3. Find the part number in the chart on next page.



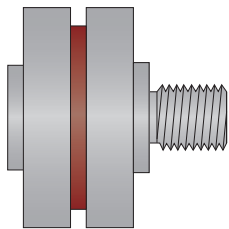
### PREFIX MATERIAL/FINISH

**PS** = CARBON STEEL, PLAIN\*  
Material/finish combinations may not be available in all sizes.

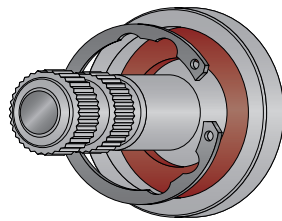
DON'T SEE WHAT YOU'RE LOOKING FOR?  
CONTACT SALES@HUYETT.COM OR  
CALL 785-392-3017

### SHIM WASHER METRIC TOLERANCES

MATERIAL		OUTSIDE DIAMETER (A)		INSIDE DIAMETER (B)		THICKNESS (C)	
(Prefix)	(Material/Finish)	(Size Range)	(Tolerance)	(Size Range)	(Tolerance)	(Size Range)	(Tolerance)
	Carbon Steel, Plain* - Shim Washer	6 mm	-0.030/-0.150 mm	3 mm	+0.120/+0.020 mm	0.100 mm	±0.030 mm
		8 - 10 mm	-0.040/-0.190 mm	4 - 6 mm	+0.150/+0.030 mm	0.150 - 0.250 mm	±0.040 mm
		12 - 18 mm	-0.050/-0.230 mm	7 - 10 mm	+0.190/+0.040 mm	0.300 - 1.000 mm	±0.050 mm
		19 - 30 mm	-0.065/-0.275 mm	11 - 18 mm	+0.230/+0.050 mm	1.200 - 2.000 mm	±0.070 mm
		32 - 50 mm	-0.080/-0.330 mm	19 - 30 mm	+0.275/+0.065 mm		
		52 - 80 mm	-0.100/-0.400 mm	32 - 50 mm	+0.330/+0.080 mm		
		85 - 120 mm	-0.120/-0.470 mm	52 - 80 mm	+0.400/+0.100 mm		
		125 - 180 mm	-0.145/-0.545 mm	85 - 120 mm	+0.470/+0.120 mm		
		190 - 200 mm	-0.170/-0.630 mm	130 - 170 mm	+0.545/+0.145 mm		



Shim washers fill clearance between components while acting as buffers to suppress sound and prevent damage to machined components.



A lock washer or retaining ring may be used to secure the shim washer against interfacing elements.

**HOW TO READ A PART NUMBER**  
Shim washers come in standard inside diameter x outside diameter x thickness combinations.

**PS-004008-02**

ITEM PREFIX (B) INSIDE DIAMETER (A) OUTSIDE DIAMETER (C) THICKNESS

FOR DETAILED SPECIFICATIONS AND TOLERANCES, VISIT HUYETT.COM.

Prices, materials, dimensions, tolerances, designs, and grades subject to change without notice. © 2016 G.L. Huyett

\*Limited warranty for surface finish: 30 days from date of shipment. See page 12 for details.



DIN 988



## SHIM WASHER

ITEM NUMBER	(A) OUTSIDE DIAMETER	(C) THICKNESS
-------------	----------------------	---------------

### 3.00 mm

(B) Inside Diameter

PS-003006-01	6.00 mm	0.10 mm
PS-003006-015	6.00 mm	0.15 mm
PS-003006-02	6.00 mm	0.20 mm
PS-003006-03	6.00 mm	0.30 mm
PS-003006-05	6.00 mm	0.50 mm
PS-003006-1	6.00 mm	1.00 mm

### 4.00 mm

(B) Inside Diameter

PS-004008-01	8.00 mm	0.10 mm
PS-004008-015	8.00 mm	0.15 mm
PS-004008-02	8.00 mm	0.20 mm
PS-004008-03	8.00 mm	0.30 mm
PS-004008-05	8.00 mm	0.50 mm
PS-004008-1	8.00 mm	1.00 mm

### 5.00 mm

(B) Inside Diameter

PS-005010-01	10.00 mm	0.10 mm
PS-005010-015	10.00 mm	0.15 mm
PS-005010-02	10.00 mm	0.20 mm
PS-005010-03	10.00 mm	0.30 mm
PS-005010-05	10.00 mm	0.50 mm
PS-005010-1	10.00 mm	1.00 mm

### 6.00 mm

(B) Inside Diameter

PS-006012-01	12.00 mm	0.10 mm
PS-006012-015	12.00 mm	0.15 mm
PS-006012-02	12.00 mm	0.20 mm
PS-006012-03	12.00 mm	0.30 mm
PS-006012-05	12.00 mm	0.50 mm
PS-006012-1	12.00 mm	1.00 mm

### 7.00 mm

(B) Inside Diameter

PS-007013-01	13.00 mm	0.10 mm
PS-007013-015	13.00 mm	0.15 mm
PS-007013-02	13.00 mm	0.20 mm
PS-007013-025	13.00 mm	0.25 mm
PS-007013-03	13.00 mm	0.30 mm
PS-007013-05	13.00 mm	0.50 mm
PS-007013-1	13.00 mm	1.00 mm

### 8.00 mm

(B) Inside Diameter

PS-008014-01	14.00 mm	0.10 mm
PS-008014-015	14.00 mm	0.15 mm
PS-008014-02	14.00 mm	0.20 mm
PS-008014-025	14.00 mm	0.25 mm

ITEM NUMBER	(A) OUTSIDE DIAMETER	(C) THICKNESS
-------------	----------------------	---------------

PS-008014-03	14.00 mm	0.30 mm
PS-008014-05	14.00 mm	0.50 mm
PS-008014-1	14.00 mm	1.00 mm

### 9.00 mm

(B) Inside Diameter

PS-009015-01	15.00 mm	0.10 mm
PS-009015-015	15.00 mm	0.15 mm
PS-009015-02	15.00 mm	0.20 mm
PS-009015-025	15.00 mm	0.25 mm
PS-009015-03	15.00 mm	0.30 mm
PS-009015-05	15.00 mm	0.50 mm
PS-009015-1	15.00 mm	1.00 mm

### 10.00 mm

(B) Inside Diameter

PS-010016-01	16.00 mm	0.10 mm
PS-010016-015	16.00 mm	0.15 mm
PS-010016-02	16.00 mm	0.20 mm
PS-010016-025	16.00 mm	0.25 mm
PS-010016-03	16.00 mm	0.30 mm
PS-010016-05	16.00 mm	0.50 mm
PS-010016-1	16.00 mm	1.00 mm

### 11.00 mm

(B) Inside Diameter

PS-011017-01	17.00 mm	0.10 mm
PS-011017-015	17.00 mm	0.15 mm
PS-011017-02	17.00 mm	0.20 mm
PS-011017-03	17.00 mm	0.30 mm
PS-011017-05	17.00 mm	0.50 mm
PS-011017-1	17.00 mm	1.00 mm

### 12.00 mm

(B) Inside Diameter

PS-012018-01	18.00 mm	0.10 mm
PS-012018-015	18.00 mm	0.15 mm
PS-012018-02	18.00 mm	0.20 mm
PS-012018-025	18.00 mm	0.25 mm
PS-012018-03	18.00 mm	0.30 mm
PS-012018-05	18.00 mm	0.50 mm
PS-012018-1	18.00 mm	1.00 mm

### 13.00 mm

(B) Inside Diameter

PS-013019-01	19.00 mm	0.10 mm
PS-013019-015	19.00 mm	0.15 mm
PS-013019-02	19.00 mm	0.20 mm
PS-013019-03	19.00 mm	0.30 mm
PS-013019-05	19.00 mm	0.50 mm
PS-013019-1	19.00 mm	1.00 mm
PS-013019-12	19.00 mm	1.20 mm

ITEM NUMBER	(A) OUTSIDE DIAMETER	(C) THICKNESS
-------------	----------------------	---------------

### 14.00 mm

(B) Inside Diameter

PS-014020-01	20.00 mm	0.10 mm
PS-014020-015	20.00 mm	0.15 mm
PS-014020-02	20.00 mm	0.20 mm
PS-014020-025	20.00 mm	0.25 mm
PS-014020-03	20.00 mm	0.30 mm
PS-014020-05	20.00 mm	0.50 mm
PS-014020-1	20.00 mm	1.00 mm
PS-014020-12	20.00 mm	1.20 mm

### 15.00 mm

(B) Inside Diameter

PS-015021-01	21.00 mm	0.10 mm
PS-015021-015	21.00 mm	0.15 mm
PS-015021-02	21.00 mm	0.20 mm
PS-015021-03	21.00 mm	0.30 mm
PS-015021-05	21.00 mm	0.50 mm
PS-015021-1	21.00 mm	1.00 mm
PS-015021-12	21.00 mm	1.20 mm

### 15.00 mm

(B) Inside Diameter

PS-015022-01	22.00 mm	0.10 mm
PS-015022-015	22.00 mm	0.15 mm
PS-015022-02	22.00 mm	0.20 mm
PS-015022-025	22.00 mm	0.25 mm
PS-015022-03	22.00 mm	0.30 mm
PS-015022-05	22.00 mm	0.50 mm
PS-015022-1	22.00 mm	1.00 mm
PS-015022-12	22.00 mm	1.20 mm

### 16.00 mm

(B) Inside Diameter

PS-016022-01	22.00 mm	0.10 mm
PS-016022-015	22.00 mm	0.15 mm
PS-016022-02	22.00 mm	0.20 mm
PS-016022-025	22.00 mm	0.25 mm
PS-016022-03	22.00 mm	0.30 mm
PS-016022-05	22.00 mm	0.50 mm
PS-016022-1	22.00 mm	1.00 mm
PS-016022-12	22.00 mm	1.20 mm

### 17.00 mm

(B) Inside Diameter

PS-017024-01	24.00 mm	0.10 mm
PS-017024-015	24.00 mm	0.15 mm
PS-017024-02	24.00 mm	0.20 mm
PS-017024-025	24.00 mm	0.25 mm
PS-017024-03	24.00 mm	0.30 mm
PS-017024-05	24.00 mm	0.50 mm
PS-017024-1	24.00 mm	1.00 mm

FOR DETAILED SPECIFICATIONS AND TOLERANCES, VISIT HUYETT.COM.

Prices, materials, dimensions, tolerances, designs, and grades subject to change without notice. © 2016 G.L. Huyett

\*Limited warranty for surface finish: 30 days from date of shipment. See page 12 for details.

# SHIMS & SPACERS

HUYETT.COM • 785-392-3017

BOX 232 • MINNEAPOLIS, KS • 67467

SALES@HUYETT.COM • FAX 785-392-2845

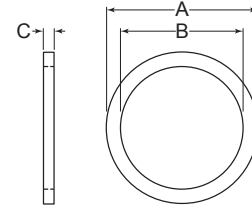
## SHIM WASHER



DIN 988

### PREFIX MATERIAL/FINISH

**PS** = **SPRING STEEL, PLAIN\***  
Material/finish combinations may not be available in all sizes.



SEE PAGE 118 FOR PS SHIM WASHER TOLERANCES

ITEM NUMBER	(A) OUTSIDE DIAMETER	(C) THICKNESS
-------------	----------------------	---------------

### 17.00 mm

(B) Inside Diameter

PS-017024-12	24.00 mm	1.20 mm
PS-017024-2	24.00 mm	2.00 mm

### 18.00 mm

(B) Inside Diameter

PS-018025-01	25.00 mm	0.10 mm
PS-018025-015	25.00 mm	0.15 mm
PS-018025-02	25.00 mm	0.20 mm
PS-018025-025	25.00 mm	0.25 mm
PS-018025-03	25.00 mm	0.30 mm
PS-018025-05	25.00 mm	0.50 mm
PS-018025-1	25.00 mm	1.00 mm
PS-018025-12	25.00 mm	1.20 mm

### 19.00 mm

(B) Inside Diameter

PS-019026-01	26.00 mm	0.10 mm
PS-019026-015	26.00 mm	0.15 mm
PS-019026-02	26.00 mm	0.20 mm
PS-019026-025	26.00 mm	0.25 mm
PS-019026-03	26.00 mm	0.30 mm
PS-019026-05	26.00 mm	0.50 mm
PS-019026-1	26.00 mm	1.00 mm

### 20.00 mm

(B) Inside Diameter

PS-020028-01	28.00 mm	0.10 mm
PS-020028-015	28.00 mm	0.15 mm
PS-020028-02	28.00 mm	0.20 mm
PS-020028-025	28.00 mm	0.25 mm
PS-020028-03	28.00 mm	0.30 mm
PS-020028-05	28.00 mm	0.50 mm
PS-020028-1	28.00 mm	1.00 mm
PS-020028-12	28.00 mm	1.20 mm
PS-020028-15	28.00 mm	1.50 mm

### 22.00 mm

(B) Inside Diameter

PS-022030-01	30.00 mm	0.10 mm
PS-022030-015	30.00 mm	0.15 mm
PS-022030-02	30.00 mm	0.20 mm
PS-022030-025	30.00 mm	0.25 mm

ITEM NUMBER	(A) OUTSIDE DIAMETER	(C) THICKNESS
-------------	----------------------	---------------

PS-022030-03	30.00 mm	0.30 mm
PS-022030-05	30.00 mm	0.50 mm
PS-022030-1	30.00 mm	1.00 mm
PS-022030-12	30.00 mm	1.20 mm
PS-022030-15	30.00 mm	1.50 mm
PS-022032-01	32.00 mm	0.10 mm
PS-022032-015	32.00 mm	0.15 mm
PS-022032-02	32.00 mm	0.20 mm
PS-022032-025	32.00 mm	0.25 mm
PS-022032-03	32.00 mm	0.30 mm
PS-022032-05	32.00 mm	0.50 mm
PS-022032-1	32.00 mm	1.00 mm
PS-022032-12	32.00 mm	1.20 mm
PS-022032-15	32.00 mm	1.50 mm

### 25.00 mm

(B) Inside Diameter

PS-025035-01	35.00 mm	0.10 mm
PS-025035-015	35.00 mm	0.15 mm
PS-025035-02	35.00 mm	0.20 mm
PS-025035-025	35.00 mm	0.25 mm
PS-025035-03	35.00 mm	0.30 mm
PS-025035-05	35.00 mm	0.50 mm
PS-025035-1	35.00 mm	1.00 mm
PS-025035-12	35.00 mm	1.20 mm
PS-025035-15	35.00 mm	1.50 mm
PS-025036-01	36.00 mm	0.10 mm
PS-025036-015	36.00 mm	0.15 mm
PS-025036-02	36.00 mm	0.20 mm
PS-025036-025	36.00 mm	0.25 mm
PS-025036-03	36.00 mm	0.30 mm
PS-025036-05	36.00 mm	0.50 mm
PS-025036-1	36.00 mm	1.00 mm
PS-025036-12	36.00 mm	1.20 mm
PS-025036-15	36.00 mm	1.50 mm

### 26.00 mm

(B) Inside Diameter

PS-026037-01	37.00 mm	0.10 mm
PS-026037-015	37.00 mm	0.15 mm
PS-026037-02	37.00 mm	0.20 mm
PS-026037-025	37.00 mm	0.25 mm
PS-026037-03	37.00 mm	0.30 mm
PS-026037-05	37.00 mm	0.50 mm

ITEM NUMBER	(A) OUTSIDE DIAMETER	(C) THICKNESS
-------------	----------------------	---------------

PS-026037-1	37.00 mm	1.00 mm
PS-026037-12	37.00 mm	1.20 mm
PS-026037-15	37.00 mm	1.50 mm

### 28.00 mm

(B) Inside Diameter

PS-028040-01	40.00 mm	0.10 mm
PS-028040-015	40.00 mm	0.15 mm
PS-028040-02	40.00 mm	0.20 mm
PS-028040-025	40.00 mm	0.25 mm
PS-028040-03	40.00 mm	0.30 mm
PS-028040-05	40.00 mm	0.50 mm
PS-028040-1	40.00 mm	1.00 mm
PS-028040-12	40.00 mm	1.20 mm
PS-028040-15	40.00 mm	1.50 mm

### 30.00 mm

(B) Inside Diameter

PS-030042-01	42.00 mm	0.10 mm
PS-030042-015	42.00 mm	0.15 mm
PS-030042-02	42.00 mm	0.20 mm
PS-030042-025	42.00 mm	0.25 mm
PS-030042-03	42.00 mm	0.30 mm
PS-030042-05	42.00 mm	0.50 mm
PS-030042-1	42.00 mm	1.00 mm
PS-030042-12	42.00 mm	1.20 mm
PS-030042-15	42.00 mm	1.50 mm
PS-030042-2	42.00 mm	2.00 mm

### 32.00 mm

(B) Inside Diameter

PS-032045-01	45.00 mm	0.10 mm
PS-032045-015	45.00 mm	0.15 mm
PS-032045-02	45.00 mm	0.20 mm
PS-032045-025	45.00 mm	0.25 mm
PS-032045-03	45.00 mm	0.30 mm
PS-032045-05	45.00 mm	0.50 mm
PS-032045-1	45.00 mm	1.00 mm
PS-032045-12	45.00 mm	1.20 mm
PS-032045-15	45.00 mm	1.50 mm
PS-032045-2	45.00 mm	2.00 mm

FOR DETAILED SPECIFICATIONS AND TOLERANCES, VISIT HUYETT.COM.

Prices, materials, dimensions, tolerances, designs, and grades subject to change without notice. © 2016 G.L. Huyett

\*Limited warranty for surface finish: 30 days from date of shipment. See page 12 for details.





DIN 988



## SHIM WASHER

ITEM NUMBER	(A) OUTSIDE DIAMETER	(C) THICKNESS
-------------	----------------------	---------------

### 35.00 mm

(B) Inside Diameter

PS-035040-01	40.00 mm	0.10 mm
PS-035040-015	40.00 mm	0.15 mm
PS-035045-01	45.00 mm	0.10 mm
PS-035045-015	45.00 mm	0.15 mm
PS-035045-02	45.00 mm	0.20 mm
PS-035045-025	45.00 mm	0.25 mm
PS-035045-03	45.00 mm	0.30 mm
PS-035045-05	45.00 mm	0.50 mm
PS-035045-1	45.00 mm	1.00 mm
PS-035045-12	45.00 mm	1.20 mm
PS-035045-15	45.00 mm	1.50 mm
PS-035045-2	45.00 mm	2.00 mm

### 36.00 mm

(B) Inside Diameter

PS-036045-01	45.00 mm	0.10 mm
PS-036045-015	45.00 mm	0.15 mm
PS-036045-02	45.00 mm	0.20 mm
PS-036045-025	45.00 mm	0.25 mm
PS-036045-03	45.00 mm	0.30 mm
PS-036045-05	45.00 mm	0.50 mm
PS-036045-1	45.00 mm	1.00 mm
PS-036045-12	45.00 mm	1.20 mm
PS-036045-15	45.00 mm	1.50 mm
PS-036045-2	45.00 mm	2.00 mm

### 37.00 mm

(B) Inside Diameter

PS-037047-01	47.00 mm	0.10 mm
PS-037047-015	47.00 mm	0.15 mm
PS-037047-02	47.00 mm	0.20 mm
PS-037047-025	47.00 mm	0.25 mm
PS-037047-03	47.00 mm	0.30 mm
PS-037047-05	47.00 mm	0.50 mm
PS-037047-1	47.00 mm	1.00 mm
PS-037047-12	47.00 mm	1.20 mm
PS-037047-15	47.00 mm	1.50 mm
PS-037047-2	47.00 mm	2.00 mm

### 40.00 mm

(B) Inside Diameter

PS-040047-01	47.00 mm	0.10 mm
PS-040047-015	47.00 mm	0.15 mm
PS-040050-01	50.00 mm	0.10 mm
PS-040050-015	50.00 mm	0.15 mm
PS-040050-02	50.00 mm	0.20 mm
PS-040050-025	50.00 mm	0.25 mm
PS-040050-03	50.00 mm	0.30 mm
PS-040050-05	50.00 mm	0.50 mm
PS-040050-1	50.00 mm	1.00 mm

ITEM NUMBER	(A) OUTSIDE DIAMETER	(C) THICKNESS
-------------	----------------------	---------------

PS-040050-12	50.00 mm	1.20 mm
PS-040050-15	50.00 mm	1.50 mm
PS-040050-2	50.00 mm	2.00 mm

### 42.00 mm

(B) Inside Diameter

PS-042052-01	52.00 mm	0.10 mm
PS-042052-015	52.00 mm	0.15 mm
PS-042052-02	52.00 mm	0.20 mm
PS-042052-025	52.00 mm	0.25 mm
PS-042052-03	52.00 mm	0.30 mm
PS-042052-05	52.00 mm	0.50 mm
PS-042052-1	52.00 mm	1.00 mm
PS-042052-12	52.00 mm	1.20 mm
PS-042052-15	52.00 mm	1.50 mm
PS-042052-2	52.00 mm	2.00 mm

### 45.00 mm

(B) Inside Diameter

PS-045055-01	55.00 mm	0.10 mm
PS-045055-015	55.00 mm	0.15 mm
PS-045055-02	55.00 mm	0.20 mm
PS-045055-025	55.00 mm	0.25 mm
PS-045055-03	55.00 mm	0.30 mm
PS-045055-05	55.00 mm	0.50 mm
PS-045055-1	55.00 mm	1.00 mm
PS-045055-12	55.00 mm	1.20 mm
PS-045055-15	55.00 mm	1.50 mm
PS-045055-2	55.00 mm	2.00 mm
PS-045056-01	56.00 mm	0.10 mm
PS-045056-015	56.00 mm	0.15 mm
PS-045056-02	56.00 mm	0.20 mm
PS-045056-025	56.00 mm	0.25 mm
PS-045056-03	56.00 mm	0.30 mm
PS-045056-05	56.00 mm	0.50 mm
PS-045056-1	56.00 mm	1.00 mm
PS-045056-12	56.00 mm	1.20 mm
PS-045056-15	56.00 mm	1.50 mm
PS-045056-2	56.00 mm	2.00 mm

### 48.00 mm

(B) Inside Diameter

PS-048060-01	60.00 mm	0.10 mm
PS-048060-015	60.00 mm	0.15 mm
PS-048060-02	60.00 mm	0.20 mm
PS-048060-025	60.00 mm	0.25 mm
PS-048060-03	60.00 mm	0.30 mm
PS-048060-05	60.00 mm	0.50 mm
PS-048060-1	60.00 mm	1.00 mm
PS-048060-12	60.00 mm	1.20 mm
PS-048060-15	60.00 mm	1.50 mm
PS-048060-2	60.00 mm	2.00 mm

ITEM NUMBER	(A) OUTSIDE DIAMETER	(C) THICKNESS
-------------	----------------------	---------------

### 50.00 mm

(B) Inside Diameter

PS-050062-01	62.00 mm	0.10 mm
PS-050062-015	62.00 mm	0.15 mm
PS-050062-02	62.00 mm	0.20 mm
PS-050062-025	62.00 mm	0.25 mm
PS-050062-03	62.00 mm	0.30 mm
PS-050062-05	62.00 mm	0.50 mm
PS-050062-1	62.00 mm	1.00 mm
PS-050062-12	62.00 mm	1.20 mm
PS-050062-15	62.00 mm	1.50 mm
PS-050062-2	62.00 mm	2.00 mm
PS-050063-01	63.00 mm	0.10 mm
PS-050063-015	63.00 mm	0.15 mm
PS-050063-02	63.00 mm	0.20 mm
PS-050063-025	63.00 mm	0.25 mm
PS-050063-03	63.00 mm	0.30 mm
PS-050063-05	63.00 mm	0.50 mm
PS-050063-1	63.00 mm	1.00 mm
PS-050063-12	63.00 mm	1.20 mm
PS-050063-15	63.00 mm	1.50 mm
PS-050063-2	63.00 mm	2.00 mm
PS-050070-12	70.00 mm	1.20 mm

### 52.00 mm

(B) Inside Diameter

PS-052065-01	65.00 mm	0.10 mm
PS-052065-015	65.00 mm	0.15 mm
PS-052065-02	65.00 mm	0.20 mm
PS-052065-025	65.00 mm	0.25 mm
PS-052065-03	65.00 mm	0.30 mm
PS-052065-05	65.00 mm	0.50 mm
PS-052065-1	65.00 mm	1.00 mm
PS-052065-12	65.00 mm	1.20 mm
PS-052065-15	65.00 mm	1.50 mm
PS-052065-2	65.00 mm	2.00 mm

### 54.00 mm

(B) Inside Diameter

PS-054062-01	62.00 mm	0.10 mm
PS-054062-015	62.00 mm	0.15 mm
PS-054062-15	62.00 mm	1.50 mm

### 55.00 mm

(B) Inside Diameter

PS-055068-01	68.00 mm	0.10 mm
PS-055068-015	68.00 mm	0.15 mm
PS-055068-02	68.00 mm	0.20 mm
PS-055068-025	68.00 mm	0.25 mm
PS-055068-03	68.00 mm	0.30 mm
PS-055068-05	68.00 mm	0.50 mm
PS-055068-1	68.00 mm	1.00 mm

FOR DETAILED SPECIFICATIONS AND TOLERANCES, VISIT HUYETT.COM.

Prices, materials, dimensions, tolerances, designs, and grades subject to change without notice. © 2016 G.L. Huyett

\*Limited warranty for surface finish: 30 days from date of shipment. See page 12 for details.

# SHIMS & SPACERS

HUYETT.COM • 785-392-3017

BOX 232 • MINNEAPOLIS, KS • 67467  
SALES@HUYETT.COM • FAX 785-392-2845

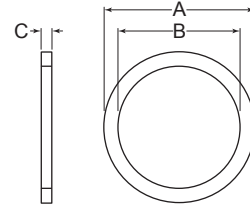
## SHIM WASHER



DIN 988

### PREFIX MATERIAL/FINISH

**PS** = **SPRING STEEL, PLAIN\***  
Material/finish combinations may not be available in all sizes.



SEE PAGE 118 FOR  
PS SHIM WASHER TOLERANCES

ITEM NUMBER	(A) OUTSIDE DIAMETER	(C) THICKNESS
<b>55.00 mm</b> (B) Inside Diameter		
PS-055068-12	68.00 mm	1.20 mm
PS-055068-15	68.00 mm	1.50 mm
PS-055068-2	68.00 mm	2.00 mm

ITEM NUMBER	(A) OUTSIDE DIAMETER	(C) THICKNESS
<b>56.00 mm</b> (B) Inside Diameter		
PS-056070-01	70.00 mm	0.10 mm
PS-056070-015	70.00 mm	0.15 mm
PS-056070-02	70.00 mm	0.20 mm
PS-056070-025	70.00 mm	0.25 mm
PS-056070-03	70.00 mm	0.30 mm
PS-056070-05	70.00 mm	0.50 mm
PS-056070-1	70.00 mm	1.00 mm
PS-056070-15	70.00 mm	1.50 mm
PS-056072-01	72.00 mm	0.10 mm
PS-056072-015	72.00 mm	0.15 mm
PS-056072-02	72.00 mm	0.20 mm
PS-056072-03	72.00 mm	0.30 mm
PS-056072-05	72.00 mm	0.50 mm
PS-056072-1	72.00 mm	1.00 mm
PS-056072-2	72.00 mm	2.00 mm

ITEM NUMBER	(A) OUTSIDE DIAMETER	(C) THICKNESS
<b>59.00 mm</b> (B) Inside Diameter		
PS-059072-01	72.00 mm	0.10 mm
PS-059072-03	72.00 mm	0.30 mm

ITEM NUMBER	(A) OUTSIDE DIAMETER	(C) THICKNESS
<b>60.00 mm</b> (B) Inside Diameter		
PS-060075-01	75.00 mm	0.10 mm
PS-060075-02	75.00 mm	0.20 mm
PS-060075-03	75.00 mm	0.30 mm
PS-060075-05	75.00 mm	0.50 mm
PS-060075-1	75.00 mm	1.00 mm
PS-060075-15	75.00 mm	1.50 mm
PS-060075-2	75.00 mm	2.00 mm

ITEM NUMBER	(A) OUTSIDE DIAMETER	(C) THICKNESS
<b>63.00 mm</b> (B) Inside Diameter		
PS-063080-01	80.00 mm	0.10 mm
PS-063080-015	80.00 mm	0.15 mm
PS-063080-02	80.00 mm	0.20 mm

ITEM NUMBER	(A) OUTSIDE DIAMETER	(C) THICKNESS
PS-063080-03	80.00 mm	0.30 mm
PS-063080-05	80.00 mm	0.50 mm
PS-063080-1	80.00 mm	1.00 mm
PS-063080-2	80.00 mm	2.00 mm

ITEM NUMBER	(A) OUTSIDE DIAMETER	(C) THICKNESS
<b>65.00 mm</b> (B) Inside Diameter		
PS-065085-01	85.00 mm	0.10 mm
PS-065085-02	85.00 mm	0.20 mm
PS-065085-03	85.00 mm	0.30 mm
PS-065085-05	85.00 mm	0.50 mm
PS-065085-1	85.00 mm	1.00 mm
PS-065085-15	85.00 mm	1.50 mm
PS-065085-2	85.00 mm	2.00 mm

ITEM NUMBER	(A) OUTSIDE DIAMETER	(C) THICKNESS
<b>70.00 mm</b> (B) Inside Diameter		
PS-070080-01	80.00 mm	0.10 mm
PS-070080-015	80.00 mm	0.15 mm
PS-070090-01	90.00 mm	0.10 mm
PS-070090-015	90.00 mm	0.15 mm
PS-070090-02	90.00 mm	0.20 mm
PS-070090-03	90.00 mm	0.30 mm
PS-070090-05	90.00 mm	0.50 mm
PS-070090-1	90.00 mm	1.00 mm
PS-070090-15	90.00 mm	1.50 mm
PS-070090-2	90.00 mm	2.00 mm

ITEM NUMBER	(A) OUTSIDE DIAMETER	(C) THICKNESS
<b>75.00 mm</b> (B) Inside Diameter		
PS-075095-01	95.00 mm	0.10 mm
PS-075095-015	95.00 mm	0.15 mm
PS-075095-02	95.00 mm	0.20 mm
PS-075095-03	95.00 mm	0.30 mm
PS-075095-05	95.00 mm	0.50 mm
PS-075095-1	95.00 mm	1.00 mm
PS-075095-15	95.00 mm	1.50 mm
PS-075095-2	95.00 mm	2.00 mm

ITEM NUMBER	(A) OUTSIDE DIAMETER	(C) THICKNESS
<b>80.00 mm</b> (B) Inside Diameter		
PS-080090-01	90.00 mm	0.10 mm
PS-080090-015	90.00 mm	0.15 mm
PS-080100-01	100.00 mm	0.10 mm
PS-080100-015	100.00 mm	0.15 mm

ITEM NUMBER	(A) OUTSIDE DIAMETER	(C) THICKNESS
PS-080100-02	100.00 mm	0.20 mm
PS-080100-03	100.00 mm	0.30 mm
PS-080100-05	100.00 mm	0.50 mm
PS-080100-1	100.00 mm	1.00 mm
PS-080100-15	100.00 mm	1.50 mm
PS-080100-2	100.00 mm	2.00 mm

ITEM NUMBER	(A) OUTSIDE DIAMETER	(C) THICKNESS
<b>85.00 mm</b> (B) Inside Diameter		
PS-085105-01	105.00 mm	0.10 mm
PS-085105-03	105.00 mm	0.30 mm
PS-085105-05	105.00 mm	0.50 mm
PS-085105-1	105.00 mm	1.00 mm

ITEM NUMBER	(A) OUTSIDE DIAMETER	(C) THICKNESS
<b>88.00 mm</b> (B) Inside Diameter		
PS-088100-015	100.00 mm	0.15 mm

ITEM NUMBER	(A) OUTSIDE DIAMETER	(C) THICKNESS
<b>90.00 mm</b> (B) Inside Diameter		
PS-090110-01	110.00 mm	0.10 mm
PS-090110-015	110.00 mm	0.15 mm
PS-090110-02	110.00 mm	0.20 mm
PS-090110-03	110.00 mm	0.30 mm
PS-090110-05	110.00 mm	0.50 mm
PS-090110-1	110.00 mm	1.00 mm
PS-090110-15	110.00 mm	1.50 mm
PS-090110-2	110.00 mm	2.00 mm

ITEM NUMBER	(A) OUTSIDE DIAMETER	(C) THICKNESS
<b>95.00 mm</b> (B) Inside Diameter		
PS-095115-01	115.00 mm	0.10 mm
PS-095115-03	115.00 mm	0.30 mm
PS-095115-05	115.00 mm	0.50 mm
PS-095115-1	115.00 mm	1.00 mm
PS-095115-12	115.00 mm	1.50 mm
PS-095115-2	115.00 mm	2.00 mm

ITEM NUMBER	(A) OUTSIDE DIAMETER	(C) THICKNESS
<b>100.00 mm</b> (B) Inside Diameter		
PS-100120-01	120.00 mm	0.10 mm
PS-100120-02	120.00 mm	0.20 mm
PS-100120-03	120.00 mm	0.30 mm
PS-100120-05	120.00 mm	0.50 mm
PS-100120-1	120.00 mm	1.00 mm

FOR DETAILED SPECIFICATIONS AND TOLERANCES, VISIT [HUYETT.COM](http://HUYETT.COM).

Prices, materials, dimensions, tolerances, designs, and grades subject to change without notice. © 2016 G.L. Huyett

\*Limited warranty for surface finish: 30 days from date of shipment. See page 12 for details.



DIN 988



## SHIM WASHER

ITEM NUMBER	(A) OUTSIDE DIAMETER	(C) THICKNESS
PS-100120-2	120.00 mm	2.00 mm
PS-100125-01	125.00 mm	0.10 mm
PS-100125-02	125.00 mm	0.20 mm
PS-100125-03	125.00 mm	0.30 mm
PS-100125-05	125.00 mm	0.50 mm
PS-100125-1	125.00 mm	1.00 mm

105.00 mm (B) Inside Diameter		
PS-105130-01	130.00 mm	0.10 mm
PS-105130-015	130.00 mm	0.15 mm
PS-105130-02	130.00 mm	0.20 mm
PS-105130-03	130.00 mm	0.30 mm
PS-105130-05	130.00 mm	0.50 mm
PS-105130-1	130.00 mm	1.00 mm

110.00 mm (B) Inside Diameter		
PS-110125-01	125.00 mm	0.10 mm
PS-110125-015	125.00 mm	0.15 mm
PS-110140-01	140.00 mm	0.10 mm
PS-110140-015	140.00 mm	0.15 mm
PS-110140-02	140.00 mm	0.20 mm

ITEM NUMBER	(A) OUTSIDE DIAMETER	(C) THICKNESS
PS-110140-03	140.00 mm	0.30 mm
PS-110140-05	140.00 mm	0.50 mm
PS-110140-1	140.00 mm	1.00 mm

120.00 mm (B) Inside Diameter		
PS-120150-01	150.00 mm	0.10 mm
PS-120150-015	150.00 mm	0.15 mm
PS-120150-02	150.00 mm	0.20 mm
PS-120150-03	150.00 mm	0.30 mm
PS-120150-05	150.00 mm	0.50 mm
PS-120150-1	150.00 mm	1.00 mm

130.00 mm (B) Inside Diameter		
PS-130160-01	160.00 mm	0.10 mm
PS-130160-03	160.00 mm	0.30 mm
PS-130160-05	160.00 mm	0.50 mm
PS-130160-1	160.00 mm	1.00 mm

ITEM NUMBER	(A) OUTSIDE DIAMETER	(C) THICKNESS
-------------	----------------------	---------------

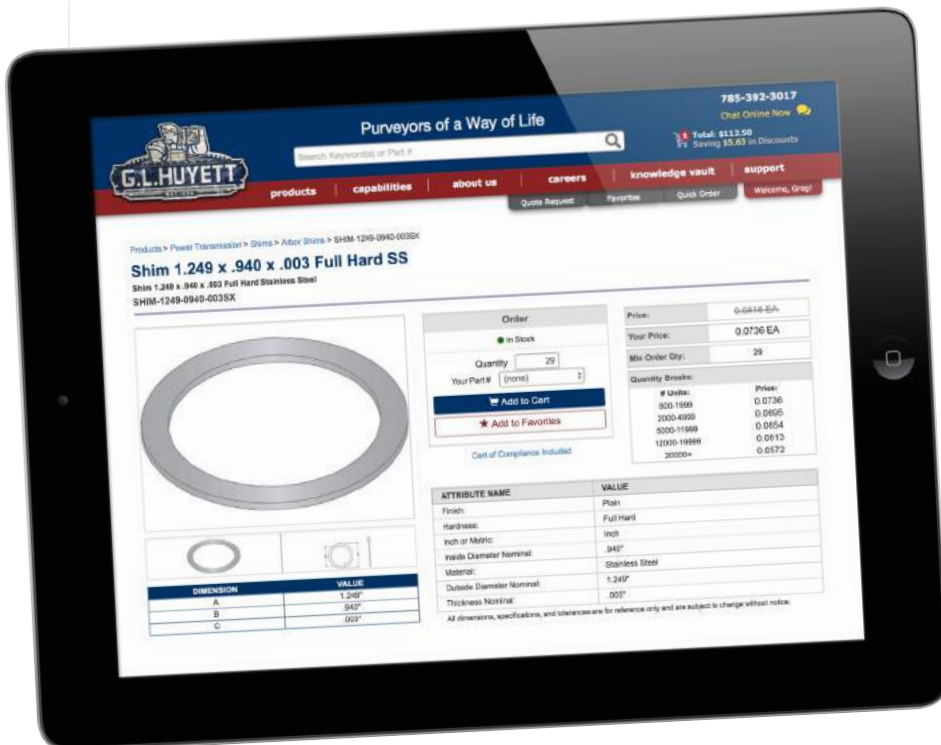
140.00 mm (B) Inside Diameter		
PS-140170-03	170.00 mm	0.30 mm
PS-140170-05	170.00 mm	0.50 mm
PS-140170-1	170.00 mm	1.00 mm

150.00 mm (B) Inside Diameter		
PS-150180-01	180.00 mm	0.10 mm
PS-150180-03	180.00 mm	0.30 mm
PS-150180-05	180.00 mm	0.50 mm
PS-150180-1	180.00 mm	1.00 mm

160.00 mm (B) Inside Diameter		
PS-160190-05	190.00 mm	0.50 mm
PS-160190-1	190.00 mm	1.00 mm

170.00 mm (B) Inside Diameter		
PS-170200-03	200.00 mm	0.30 mm
PS-170200-05	200.00 mm	0.50 mm

FIND IT HERE - ORDER ON ANY DEVICE



## HUYETT.COM

LOW MINIMUMS • GREAT PRICES  
EASY ORDERING

- ✳ **Personal Pricing**  
*Log in to instantly see your pricing and quantity breaks.*
- ✳ **Your Order History**  
*One-page display of your order history along with tracking numbers and delivery information.*  
*Know what shipped and when.*  
*Reorder from past orders with a single click.*
- ✳ **Your Part Numbers**  
*Add your part number to any part.*  
*Search and order using your part numbers.*

FOR DETAILED SPECIFICATIONS AND TOLERANCES, VISIT HUYETT.COM.

Prices, materials, dimensions, tolerances, designs, and grades subject to change without notice. © 2016 G.L. Huyett

\*Limited warranty for surface finish: 30 days from date of shipment. See page 12 for details.