



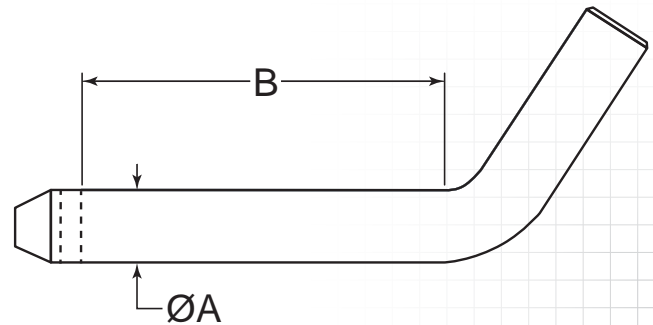
BENT

DESCRIPTION

Bent pins are simple pins with one straight end and a 25° bend at the opposite end. This low cost pin is drilled and generally used with a wire form pin.

HOW TO IDENTIFY

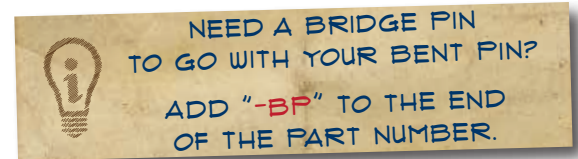
1. Verify bent pin with a hole drilled through the straight end.
2. Measure diameter (A).
3. Measure effective length (B).
4. Find the part in the chart below.



PREFIX MATERIAL/FINISH

BTP = LOW CARBON STEEL, ZINC CLEAR
####-BP = BRIDGE PIN COMBO OPTION

Material/finish combinations may not be available in all sizes.



ITEM NUMBER	(A) OUTSIDE DIAMETER	(B) EFFECTIVE LENGTH	HOLE DIAMETER	COMMONLY USED WITH BRIDGE PIN (SEE PG. 106)
	-.002/-007"			
BTP-0312-2500	.313" (5/16)	2.500" (2-1/2)	.093"	BP-213
BTP-0312-3000	.313" (5/16)	3.000" (3)	.093"	BP-213
BTP-0375-2500	.375" (3/8)	2.500" (2-1/2)	.093"	BP-213
BTP-0375-3000	.375" (3/8)	3.000" (3)	.093"	BP-213
BTP-0375-3500	.375" (3/8)	3.500" (3-1/2)	.093"	BP-213
BTP-0375-4000	.375" (3/8)	4.000" (4)	.093"	BP-213
	-.004/-009"			
BTP-0500-2500	.500" (1/2)	2.500" (2-1/2)	.156"	BP-211
BTP-0500-3000	.500" (1/2)	3.000" (3)	.156"	BP-211
BTP-0500-4000	.500" (1/2)	4.000" (4)	.156"	BP-211
BTP-0500-4500	.500" (1/2)	4.500" (4-1/2)	.156"	BP-211
BTP-0500-5000	.500" (1/2)	5.000" (5)	.156"	BP-211
BTP-0625-3000	.625" (5/8)	3.000" (3)	.203"	BP-211
BTP-0625-4000	.625" (5/8)	4.000" (4)	.203"	BP-211
BTP-0625-5000	.625" (5/8)	5.000" (5)	.203"	BP-211
BTP-0750-3500	.750" (3/4)	3.500" (3-1/2)	.203"	BP-211
BTP-0750-4500	.750" (3/4)	4.500" (4-1/2)	.203"	BP-211
BTP-0750-5000	.750" (3/4)	5.000" (5)	.203"	BP-211
BTP-1000-4750	1.000" (1)	4.750" (4-3/4)	.203"	BP-210
BTP-1000-6750	1.000" (1)	6.750" (6-3/4)	.203"	BP-210