

# CLEVIS PINS

HUYETT.COM • 785-392-3017

BOX 232 • MINNEAPOLIS, KS • 67467  
SALES@HUYETT.COM • FAX 785-392-2845

## GROOVED

### DESCRIPTION

Standard clevis pin with an annular groove. These pins are best used in automated assembly or where lateral movement is undesirable.

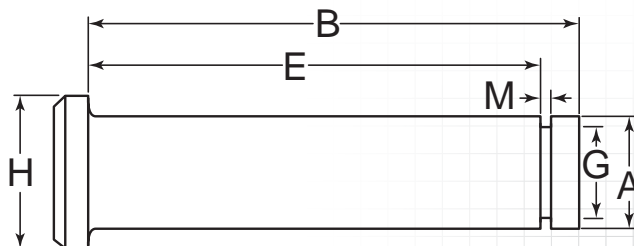
### PREFIX

### MATERIAL/FINISH

CLPGS = 18-8 STAINLESS STEEL, PLAIN

### HOW TO IDENTIFY

1. Verify flat head pin with a groove around the opposite end.
2. Measure diameter (A).
3. Measure shank length (B).
4. Find the part in the chart below.



ITEM NUMBER	(B) SHANK LENGTH	(E) EFFECTIVE LENGTH
<b>3/16 (.188")</b> (A) Outside Diameter .186/.181"	(H) Head Diameter: .310" .320/.302" (G) Groove Diameter: .147" .149/.147" (M) Groove Width: .030" .032/.029" (E) Tolerance: +.020/-0.000" Use With: E-018, Pg. 124	
CLPGS-0187-0500	.500" (1/2)	.406" (13/32)
CLPGS-0187-0750	.750" (3/4)	.656" (21/32)
CLPGS-0187-1000	1.000" (1)	.906" (29/32)
CLPGS-0187-1250	1.250" (1-1/4)	1.156" (1-5/32)
CLPGS-0187-1500	1.500" (1-1/2)	1.406" (1-13/32)
CLPGS-0187-2000	2.000" (2)	1.906" (1-29/32)
CLPGS-0187-2500	2.500" (2-1/2)	2.406" (2-13/32)
CLPGS-0187-3000	3.000" (3)	2.906" (2-29/32)

ITEM NUMBER	(B) SHANK LENGTH	(E) EFFECTIVE LENGTH
<b>1/4 (.250")</b> (A) Outside Diameter .248/.243"	(H) Head Diameter: .370" .380/.365" (G) Groove Diameter: .210" .213/.210" (M) Groove Width: .030" .032/.029" (E) Tolerance: +.020/-0.000" Use With: E-025, Pg. 124	
CLPGS-0250-0500	.500" (1/2)	.406" (13/32)
CLPGS-0250-0750	.750" (3/4)	.656" (21/32)
CLPGS-0250-1000	1.000" (1)	.906" (29/32)
CLPGS-0250-1250	1.250" (1-1/4)	1.156" (1-5/32)
CLPGS-0250-1500	1.500" (1-1/2)	1.406" (1-13/32)
CLPGS-0250-2000	2.000" (2)	1.906" (1-29/32)
CLPGS-0250-2250	2.250" (2-1/4)	2.156" (1-5/32)
CLPGS-0250-2500	2.500" (2-1/2)	2.406" (1-13/32)
CLPGS-0250-3000	3.000" (3)	2.906" (2-29/32)

ITEM NUMBER	(B) SHANK LENGTH	(E) EFFECTIVE LENGTH
<b>5/16 (.313")</b> (A) Outside Diameter .311/.306"	(H) Head Diameter: .434" .440/.420" (G) Groove Diameter: .250" (1/4) .253/.250" (M) Groove Width: .030" .032/.029" (E) Tolerance: +.020/-0.000" Use With: E-031, Pg. 124	
CLPGS-0312-0750	.750" (3/4)	.609" (39/64)
CLPGS-0312-1000	1.000" (1)	.859" (55/64)
CLPGS-0312-1250	1.250" (1-1/4)	1.109" (1-7/64)
CLPGS-0312-1500	1.500" (1-1/2)	1.359" (1-23/64)
CLPGS-0312-2000	2.000" (2)	1.859" (1-55/64)
CLPGS-0312-2250	2.250" (2-1/4)	2.109" (2-7/64)
CLPGS-0312-2500	2.500" (2-1/2)	2.359" (2-23/64)
CLPGS-0312-3000	3.000" (3)	2.859" (2-55/64)

ITEM NUMBER	(B) SHANK LENGTH	(E) EFFECTIVE LENGTH
<b>3/8 (.375")</b> (A) Outside Diameter .373/.368"	(H) Head Diameter: .500" (1/2) .510/.490" (G) Groove Diameter: .303" .306/.303" (M) Groove Width: .040" .042/.039" (E) Tolerance: +.020/-0.000" Use With: E-037, Pg. 124	
CLPGS-0375-1000	1.000" (1)	.843" (27/32)
CLPGS-0375-1250	1.250" (1-1/4)	1.093" (1-3/32)
CLPGS-0375-1500	1.500" (1-1/2)	1.343" (1-11/32)
CLPGS-0375-2000	2.000" (2)	1.843" (1-27/32)
CLPGS-0375-2250	2.250" (2-1/4)	2.093" (2-3/32)
CLPGS-0375-2500	2.500" (2-1/2)	2.343" (2-11/32)
CLPGS-0375-3000	3.000" (3)	2.843" (2-27/32)

ITEM NUMBER	(B) SHANK LENGTH	(E) EFFECTIVE LENGTH
<b>1/2 (.500")</b> (A) Outside Diameter .496/.491"	(H) Head Diameter: .620" .630/.615" (G) Groove Diameter: .396" .399/.396" (M) Groove Width: .048" .049/.047" (E) Tolerance: +.020/-0.000" Use With: E-050, Pg. 125	
CLPGS-0500-1500	1.500" (1-1/2)	1.343" (1-11/32)
CLPGS-0500-2000	2.000" (2)	1.843" (1-27/32)
CLPGS-0500-2500	2.500" (2-1/2)	2.343" (2-11/32)
CLPGS-0500-3000	3.000" (3)	2.843" (2-27/32)

ADDITIONAL SIZES AND FINISHES MAY BE AVAILABLE UPON REQUEST