



## ASME B18.8.1

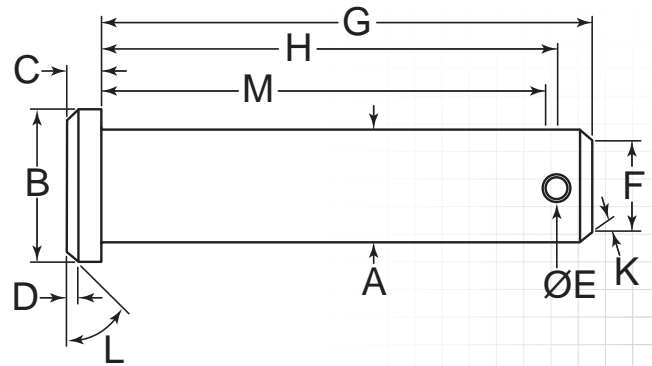
## SAE

### DESCRIPTION

Clevis pin manufactured to dimensional standards established by the Society of Automotive Engineers (SAE). See "Specifications," page 14.

### HOW TO IDENTIFY

1. Verify flat head pin with a hole drilled at the opposite end.
2. Measure diameter (A).
3. Find the part in the chart below.



### PREFIX MATERIAL/FINISH

- CLP6AE = LOW CARBON STEEL, FLAIN\*  
 CLP6AEY = LOW CARBON STEEL, ZINC YELLOW  
 CLP6AEZ = LOW CARBON STEEL, ZINC CLEAR  
 Material/finish combinations may not be available in all sizes.

ITEM NUMBER	(A) OUTSIDE DIAMETER +.002/-0.007"	(M) EFFECTIVE LENGTH	(G) SHANK LENGTH +.020/-0.000"	(B) HEAD DIAMETER +.010/-0.010"	(C) HEAD HEIGHT +.010/-0.010"	(E) HOLE DIAMETER +.010/-0.005"
PREFIX-0187	.188" (3/16)	(.440")	.580"	.310"	.060"	.088"
PREFIX-0250	.250" (1/4)	(.628")	.770"	.370"	.090"	.088"
PREFIX-0312	.313" (5/16)	(.752")	.940"	.430"	.090"	.119"
PREFIX-0375	.375" (3/8)	(.878")	1.060"	.500"	.120"	.119"
PREFIX-0437	.438" (7/16)	(1.002")	1.190"	.560"	.150"	.119"
PREFIX-0500	.500" (1/2)	(1.127")	1.360"	.620"	.150"	.151"
PREFIX-0625	.625" (5/8)	(1.337")	1.610"	.810"	.200"	.151"
PREFIX-0750	.750" (3/4)	(1.628")	1.910"	.930"	.250"	.182"
PREFIX-0875	.875" (7/8)	(1.878")	2.160"	1.030"	.310"	.182"
PREFIX-1000	1.000" (1)	(2.128")	2.410"	1.180"	.340"	.182"

ITEM NUMBER	(D) CHAMFER LENGTH +.010/-0.010"	(F) POINT DIAMETER +.005/-0.005"	(H) HEAD TO HOLE CENTER +.010/-0.010"	(K) POINT ANGLE +2°/-2°	(L) CHAMFER ANGLE +2°/-2°	COMMONLY USED WITH COTTER PIN (SEE PG. 82)
PREFIX-0187	.020"	.145"	.494"	20°	45°	CP-062-0312
PREFIX-0250	.030"	.205"	.682"	20°	45°	CP-062-0375
PREFIX-0312	.030"	.255"	.822"	20°	45°	CP-093-0500
PREFIX-0375	.030"	.325"	.948"	20°	45°	CP-093-0500
PREFIX-0437	.040"	.385"	1.072"	20°	45°	CP-093-0625
PREFIX-0500	.040"	.435"	1.213"	20°	45°	CP-125-0625
PREFIX-0625	.060"	.555"	1.463"	20°	45°	CP-125-0750
PREFIX-0750	.070"	.675"	1.729"	20°	45°	CP-156-1000
PREFIX-0875	.090"	.795"	1.979"	20°	45°	CP-156-1000
PREFIX-1000	.100"	.925"	2.229"	20°	45°	CP-156-1250

FOR DETAILED SPECIFICATIONS AND TOLERANCES, VISIT HUYETT.COM.

Prices, materials, dimensions, tolerances, designs, and grades subject to change without notice. © 2015 G.L. Huyett

\*Limited warranty for surface finish: 30 days from date of shipment. See page 8 for details.