

CLEVIS PINS

HUYETT.COM • 785-392-3017

BOX 232 • MINNEAPOLIS, KS • 67467
SALES@HUYETT.COM • FAX 785-392-2845

UNIVERSAL

DESCRIPTION

Universal (adjustable) clevis pins are drilled with multiple holes. The excess holes can be cut off after installation, or retained to use the same pin in multiple applications. These pins are extremely versatile and are usually used as a replacement part.

HOW TO IDENTIFY

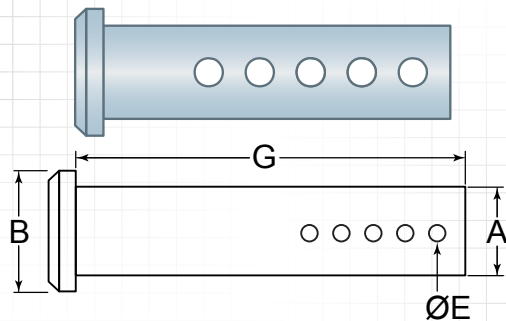
1. Verify flat head pin with multiple holes drilled at the opposite end.
2. Measure diameter (A).
3. Measure shank length (G).
4. Find the part in the chart below.

PREFIX MATERIAL/FINISH

CLPU	=	LOW CARBON STEEL, PLAIN*
CLPUS	=	300 SERIES STAINLESS STEEL, PLAIN
CLPUY	=	LOW CARBON STEEL, ZINC YELLOW
CLPUZ	=	LOW CARBON STEEL, ZINC CLEAR

Material/finish combinations may not be available in all sizes.

ASSORTMENTS AVAILABLE
SEE PAGE 43



ITEM NUMBER	(G) SHANK LENGTH	HOLE QUANTITY
-------------	------------------	---------------

3/16 (.188")

(A) Outside Diameter: .181/.186"

(B) Head Diameter: .310"
(E) Hole Diameter: .094" (3/32)
(G) Tolerance: +.020/-0.000" Use With: BP-223, Pg. 106

PREFIX	(G) SHANK LENGTH	HOLE QUANTITY
PREFIX-0187-1000	1.000" (1)	3
PREFIX-0187-1500	1.500" (1-1/2)	5
PREFIX-0187-2000	2.000" (2)	5
PREFIX-0187-2500	2.500" (2-1/2)	5
PREFIX-0187-3000	3.000" (3)	7

1/4 (.250")

(A) Outside Diameter: .243/.248"

(B) Head Diameter: .370" .380/.365"
(E) Hole Diameter: .109" (7/64) .119/.104"
(G) Tolerance: +.020/-0.000" Use With: BP-213, Pg. 107

PREFIX	(G) SHANK LENGTH	HOLE QUANTITY
PREFIX-0250-1000	1.000" (1)	3
PREFIX-0250-1500	1.500" (1-1/2)	5
PREFIX-0250-2000	2.000" (2)	6
PREFIX-0250-2500	2.500" (2-1/2)	7
PREFIX-0250-3000	3.000" (3)	7
PREFIX-0250-3500	3.500" (3-1/2)	7
PREFIX-0250-4000	4.000" (4)	7

5/16 (.313")

(A) Outside Diameter: .306/.311"

(B) Head Diameter: .434" .440/.428"
(E) Hole Diameter: .109" (7/64) .119/.104"
(G) Tolerance: +.020/-0.000" Use With: BP-213, Pg. 107

PREFIX	(G) SHANK LENGTH	HOLE QUANTITY
PREFIX-0312-1000	1.000" (1)	3
PREFIX-0312-1500	1.500" (1-1/2)	5
PREFIX-0312-2000	2.000" (2)	6
PREFIX-0312-2500	2.500" (2-1/2)	7

ITEM NUMBER	(G) SHANK LENGTH	HOLE QUANTITY
-------------	------------------	---------------

3/8 (.375")

(A) Outside Diameter: .368/.373"

(B) Head Diameter: .500" (1/2) .510/.490"
(E) Hole Diameter: .140" .150/.135"
(G) Tolerance: +.020/-0.000" Use With: BP-213, Pg. 107

PREFIX	(G) SHANK LENGTH	HOLE QUANTITY
PREFIX-0375-1000	1.000" (1)	3
PREFIX-0375-1500	1.500" (1-1/2)	5
PREFIX-0375-2000	2.000" (2)	6
PREFIX-0375-2500	2.500" (2-1/2)	7
PREFIX-0375-3000	3.000" (3)	7
PREFIX-0375-3500	3.500" (3-1/2)	7
PREFIX-0375-4000	4.000" (4)	7

7/16 (.438")

(A) Outside Diameter: .431/.436"

(B) Head Diameter: .560" .570/.552"
(E) Hole Diameter: .156" (5/32) .166/.151"
(G) Tolerance: +.020/-0.000" Use With: BP-211, Pg. 109

PREFIX	(G) SHANK LENGTH	HOLE QUANTITY
PREFIX-0437-2000	2.000" (2)	6
PREFIX-0437-2500	2.500" (2-1/2)	7
PREFIX-0437-3000	3.000" (3)	7
PREFIX-0437-3500	3.500" (3-1/2)	7
PREFIX-0437-4000	4.000" (4)	7

1/2 (.500")

(A) Outside Diameter: .491/.496"

(B) Head Diameter: .620" .630/.615"
(E) Hole Diameter: .156" (5/32) .166/.151"
(G) Tolerance: +.020/-0.000" Use With: BP-211, Pg. 109

PREFIX	(G) SHANK LENGTH	HOLE QUANTITY
PREFIX-0500-2000	2.000" (2)	6

ITEM NUMBER	(G) SHANK LENGTH	HOLE QUANTITY
-------------	------------------	---------------

9/16 (.563")

(A) Outside Diameter: .553/.558"

(B) Head Diameter: .810" .820/.800"
(E) Hole Diameter: .156" (5/32) .166/.151"
(G) Tolerance: +.020/-0.000" Use With: BP-211, Pg. 109

PREFIX	(G) SHANK LENGTH	HOLE QUANTITY
PREFIX-0562-2000	2.000" (2)	6
PREFIX-0562-3000	3.000" (3)	7
PREFIX-0562-4000	4.000" (4)	7

5/8 (.625")

(A) Outside Diameter: .616/.621"

(B) Head Diameter: .810" .820/.800"
(E) Hole Diameter: .156" (5/32) .166/.151"
(G) Tolerance: +.020/-0.000" Use With: BP-211, Pg. 109

PREFIX	(G) SHANK LENGTH	HOLE QUANTITY
PREFIX-0625-2000	2.000" (2)	6
PREFIX-0625-3000	3.000" (3)	7
PREFIX-0625-4000	4.000" (4)	7

3/4 (.750")

(A) Outside Diameter: .741/.746"

(B) Head Diameter: .934" .940/.928"
(E) Hole Diameter: .156" (5/32) .166/.151"
(G) Tolerance: +.020/-0.000" Use With: BP-211, Pg. 109

PREFIX	(G) SHANK LENGTH	HOLE QUANTITY
PREFIX-0750-2000	2.000" (2)	6
PREFIX-0750-3000	3.000" (3)	7
PREFIX-0750-4000	4.000" (4)	7

FOR DETAILED SPECIFICATIONS AND TOLERANCES, VISIT HUYETT.COM.

Prices, materials, dimensions, tolerances, designs, and grades subject to change without notice. © 2015 G.L. Huyett

*Limited warranty for surface finish: 30 days from date of shipment. See page 8 for details.