



## ASME B18.8.1

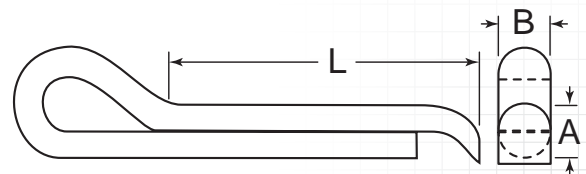
## HAMMERLOCK

### DESCRIPTION

A uniquely designed cotter pin with an extended curved prong. When struck with a hammer the shorter prong moves past the curved prong spreading the tines apart and locking the pin in place. The permanent deformation makes these pins non-reusable.

### HOW TO IDENTIFY

1. Verify longer prong with curved end.
2. Measure outside diameter (A).
3. Measure effective length (L).
4. Find the part in the chart below.



### PREFIX MATERIAL/FINISH

<b>CPH</b>	=	CARBON STEEL, PLAIN*
<b>CPH6</b>	=	STAINLESS STEEL, PLAIN
<b>CPH616</b>	=	316 STAINLESS STEEL, PLAIN
<b>CPHZ</b>	=	CARBON STEEL, ZINC CLEAR

Material/finish combinations may not be available in all sizes.

ADDITIONAL SIZES AND FINISHES MAY BE AVAILABLE UPON REQUEST

ITEM NUMBER	(L) EFFECTIVE LENGTH
-------------	-------------------------

### 3/64 (.047")

(A) Outside Diameter: .048/.044"

(B) Width: .207" .207/.161"  
(L) <1" is +030/-.030" >=1" is +.060/-.060"

PREFIX-046-0500	.500" (1/2)
PREFIX-046-0750	.750" (3/4)
PREFIX-046-1000	1.000" (1)
PREFIX-046-1250	1.250" (1-1/4)
PREFIX-046-1500	1.500" (1-1/2)

### 1/16 (.063")

(A) Outside Diameter: .060/.056"

(B) Width: .060" .060/.044"  
(L) <1" is +030/-.030" >=1" is +.060/-.060"

PREFIX-062-0250	.250" (1/4)
PREFIX-062-0500	.500" (1/2)
PREFIX-062-0625	.625" (5/8)
PREFIX-062-0750	.750" (3/4)
PREFIX-062-1000	1.000" (1)
PREFIX-062-1250	1.250" (1-1/4)
PREFIX-062-1500	1.500" (1-1/2)
PREFIX-062-1750	1.750" (1-3/4)
PREFIX-062-2000	2.000" (2)

ITEM NUMBER	(L) EFFECTIVE LENGTH
-------------	-------------------------

### 5/64 (.078")

(A) Outside Diameter: .076/.072"

(B) Width: .076" .076/.057"  
(L) <1" is +030/-.030" >=1" is +.060/-.060"

PREFIX-078-0500	.500" (1/2)
PREFIX-078-0625	.625" (5/8)
PREFIX-078-0750	.750" (3/4)
PREFIX-078-0875	.875" (7/8)
PREFIX-078-1000	1.000" (1)
PREFIX-078-1250	1.250" (1-1/4)
PREFIX-078-1500	1.500" (1-1/2)
PREFIX-078-1750	1.750" (1-3/4)
PREFIX-078-2000	2.000" (2)
PREFIX-078-2250	2.250" (2-1/4)
PREFIX-078-2500	2.500" (2-1/2)
PREFIX-078-3000	3.000" (3)
PREFIX-078-3500	3.500" (3-1/2)
PREFIX-078-4000	4.000" (4)

ITEM NUMBER	(L) EFFECTIVE LENGTH
-------------	-------------------------

### 3/32 (.094")

(A) Outside Diameter: .090/.086"

(B) Width: .090" .090/.069"  
(L) <1" is +030/-.030" >=1" is +.060/-.060"

PREFIX-093-0500	.500" (1/2)
PREFIX-093-0625	.625" (5/8)
PREFIX-093-0750	.750" (3/4)
PREFIX-093-0875	.875" (7/8)
PREFIX-093-1000	1.000" (1)
PREFIX-093-1250	1.250" (1-1/4)
PREFIX-093-1500	1.500" (1-1/2)
PREFIX-093-1750	1.750" (1-3/4)
PREFIX-093-2000	2.000" (2)
PREFIX-093-2250	2.250" (2-1/4)
PREFIX-093-2500	2.500" (2-1/2)
PREFIX-093-3000	3.000" (3)
PREFIX-093-3500	3.500" (3-1/2)
PREFIX-093-4000	4.000" (4)

### 7/64 (.109")

(A) Outside Diameter: .104/.100"

(B) Width: .104" .104/.080"  
(L) <1" is +030/-.030" >=1" is +.060/-.060"

PREFIX-109-0500	.500" (1/2)
PREFIX-109-0625	.625" (5/8)
PREFIX-109-0750	.750" (3/4)
PREFIX-109-0875	.875" (7/8)
PREFIX-109-1000	1.000" (1)
PREFIX-109-1250	1.250" (1-1/4)
PREFIX-109-1500	1.500" (1-1/2)
PREFIX-109-1750	1.750" (1-3/4)

FOR DETAILED SPECIFICATIONS AND TOLERANCES, VISIT HUYETT.COM.

Prices, materials, dimensions, tolerances, designs, and grades subject to change without notice. © 2015 G.L. Huyett

\*Limited warranty for surface finish: 30 days from date of shipment. See page 8 for details.

# COTTER PINS

HUYETT.COM • 785-392-3017

BOX 232 • MINNEAPOLIS, KS • 67467  
SALES@HUYETT.COM • FAX 785-392-2845

## HAMMERLOCK

## ASME B18.8.1

ITEM NUMBER	(L) EFFECTIVE LENGTH
PREFIX-109-2000	2.000" (2)
PREFIX-109-2250	2.250" (2-1/4)
PREFIX-109-2500	2.500" (2-1/2)
PREFIX-109-3000	3.000" (3)
PREFIX-109-3500	3.500" (3-1/2)
PREFIX-109-4000	4.000" (4)

ITEM NUMBER	(L) EFFECTIVE LENGTH
PREFIX-156-2000	2.000" (2)
PREFIX-156-2250	2.250" (2-1/4)
PREFIX-156-2500	2.500" (2-1/2)
PREFIX-156-3000	3.000" (3)
PREFIX-156-3500	3.500" (3-1/2)
PREFIX-156-4000	4.000" (4)

ITEM NUMBER	(L) EFFECTIVE LENGTH
PREFIX-250-3000	3.000" (3)
PREFIX-250-3500	3.500" (3-1/2)
PREFIX-250-4000	4.000" (4)
PREFIX-250-4500	4.500" (4-1/2)
PREFIX-250-5000	5.000" (5)
PREFIX-250-6000	6.000" (6)

1/8 (.125")	
(A) Outside Diameter: .120/.116"	
(B) Width: .120" .120/.094" (L) <1" is +030/-.030" >=1" is +.060/-.060"	
PREFIX-125-0500	.500" (1/2)
PREFIX-125-0625	.625" (5/8)
PREFIX-125-0750	.750" (3/4)
PREFIX-125-0875	.875" (7/8)
PREFIX-125-1000	1.000" (1)
PREFIX-125-1250	1.250" (1-1/4)
PREFIX-125-1500	1.500" (1-1/2)
PREFIX-125-1750	1.750" (1-3/4)
PREFIX-125-2000	2.000" (2)
PREFIX-125-2250	2.250" (2-1/4)
PREFIX-125-2500	2.500" (2-1/2)
PREFIX-125-3000	3.000" (3)
PREFIX-125-3500	3.500" (3-1/2)
PREFIX-125-4000	4.000" (4)

3/16 (.188")	
(A) Outside Diameter: .176/.172"	
(B) Width: .176" .176/.137" (L) <1" is +030/-.030" >=1" is +.060/-.060"	
PREFIX-187-0750	.750" (3/4)
PREFIX-187-0875	.875" (7/8)
PREFIX-187-1000	1.000" (1)
PREFIX-187-1250	1.250" (1-1/4)
PREFIX-187-1500	1.500" (1-1/2)
PREFIX-187-1750	1.750" (1-3/4)
PREFIX-187-2000	2.000" (2)
PREFIX-187-2250	2.250" (2-1/4)
PREFIX-187-2500	2.500" (2-1/2)
PREFIX-187-3000	3.000" (3)
PREFIX-187-3500	3.500" (3-1/2)
PREFIX-187-4000	4.000" (4)

5/16 (.313")	
(A) Outside Diameter: .280/.275"	
(B) Width: .280" .280/.220" (L) <1" is +030/-.030" >=1" is +.060/-.060"	
PREFIX-312-1000	1.000" (1)
PREFIX-312-1250	1.250" (1-1/4)
PREFIX-312-1500	1.500" (1-1/2)
PREFIX-312-1750	1.750" (1-3/4)
PREFIX-312-2000	2.000" (2)
PREFIX-312-2250	2.250" (2-1/4)
PREFIX-312-2500	2.500" (2-1/2)
PREFIX-312-2750	2.750" (2-3/4)
PREFIX-312-3000	3.000" (3)
PREFIX-312-3500	3.500" (3-1/2)
PREFIX-312-4000	4.000" (4)
PREFIX-312-5000	5.000" (5)
PREFIX-312-6000	6.000" (6)

9/64 (.141")	
(A) Outside Diameter: .134/.130"	
(B) Width: .134" .134/.104" (L) <1" is +030/-.030" >=1" is +.060/-.060"	
PREFIX-140-0750	.750" (3/4)
PREFIX-140-0875	.875" (7/8)
PREFIX-140-1000	1.000" (1)
PREFIX-140-1250	1.250" (1-1/4)
PREFIX-140-1500	1.500" (1-1/2)
PREFIX-140-1750	1.750" (1-3/4)
PREFIX-140-2000	2.000" (2)
PREFIX-140-2250	2.250" (2-1/4)
PREFIX-140-2500	2.500" (2-1/2)
PREFIX-140-3000	3.000" (3)
PREFIX-140-3500	3.500" (3-1/2)
PREFIX-140-4000	4.000" (4)

7/32 (.219")	
(A) Outside Diameter: .207/.202"	
(B) Width: .207" .207/.161" (L) <1" is +030/-.030" >=1" is +.060/-.060"	
PREFIX-218-1000	1.000" (1)
PREFIX-218-1250	1.250" (1-1/4)
PREFIX-218-1500	1.500" (1-1/2)
PREFIX-218-1750	1.750" (1-3/4)
PREFIX-218-2000	2.000" (2)
PREFIX-218-2250	2.250" (2-1/4)
PREFIX-218-2500	2.500" (2-1/2)
PREFIX-218-3000	3.000" (3)
PREFIX-218-3500	3.500" (3-1/2)
PREFIX-218-4000	4.000" (4)
PREFIX-218-4500	4.500" (4-1/2)
PREFIX-218-5000	5.000" (5)
PREFIX-218-6000	6.000" (6)

3/8 (.375")	
(A) Outside Diameter: .335/.329"	
(B) Width: .335" .335/.263" (L) <1" is +030/-.030" >=1" is +.060/-.060"	
PREFIX-375-1250	1.250" (1-1/4)
PREFIX-375-1500	1.500" (1-1/2)
PREFIX-375-1750	1.750" (1-3/4)
PREFIX-375-2000	2.000" (2)
PREFIX-375-2250	2.250" (2-1/4)
PREFIX-375-2500	2.500" (2-1/2)
PREFIX-375-3000	3.000" (3)
PREFIX-375-3500	3.500" (3-1/2)
PREFIX-375-4000	4.000" (4)
PREFIX-375-5000	5.000" (5)
PREFIX-375-6000	6.000" (6)

5/32 (.156")	
(A) Outside Diameter: .150/.146"	
(B) Width: .150" .150/.116" (L) <1" is +030/-.030" >=1" is +.060/-.060"	
PREFIX-156-0750	.750" (3/4)
PREFIX-156-0875	.875" (7/8)
PREFIX-156-1000	1.000" (1)
PREFIX-156-1250	1.250" (1-1/4)
PREFIX-156-1500	1.500" (1-1/2)
PREFIX-156-1750	1.750" (1-3/4)

1/4 (.250")	
(A) Outside Diameter: .225/.220"	
(B) Width: .225" .225/.176" (L) <1" is +030/-.030" >=1" is +.060/-.060"	
PREFIX-250-1000	1.000" (1)
PREFIX-250-1250	1.250" (1-1/4)
PREFIX-250-1500	1.500" (1-1/2)
PREFIX-250-1750	1.750" (1-3/4)
PREFIX-250-2000	2.000" (2)
PREFIX-250-2250	2.250" (2-1/4)
PREFIX-250-2500	2.500" (2-1/2)

7/16 (.438")	
(A) Outside Diameter: .406/.400"	
(B) Width: .406" .406/.320" (L) <1" is +030/-.030" >=1" is +.060/-.060"	
PREFIX-437-4000	4.000" (4)

1/2 (.500")	
(A) Outside Diameter: .473/.467"	
(B) Width: .473" .473/.373" (L) <1" is +030/-.030" >=1" is +.060/-.060"	
PREFIX-500-6000	6.000" (6)

FOR DETAILED SPECIFICATIONS AND TOLERANCES, VISIT HUYETT.COM.

Prices, materials, dimensions, tolerances, designs, and grades subject to change without notice. © 2015 G.L. Huyett

\*Limited warranty for surface finish: 30 days from date of shipment. See page 8 for details.