



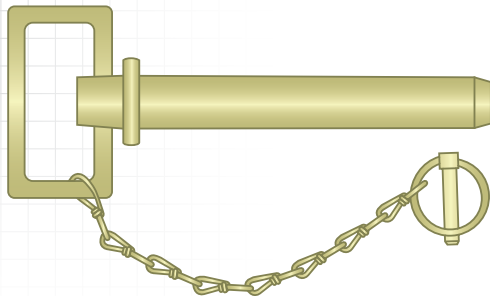
THREE-POINT PINS

HUYETT.COM • 785-392-3017

HITCH – SQUARE HANDLE W/ LYNCH

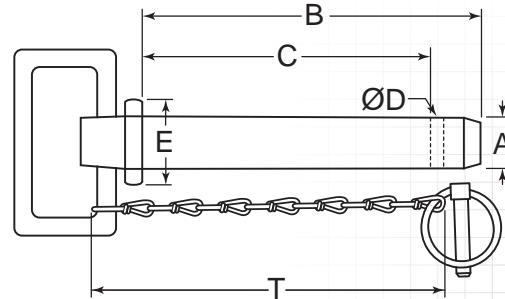
DESCRIPTION

Hitch pins are used to attach trailers and various turf and agricultural implements. Manufactured from heat treated steel with swivel handle.



HOW TO IDENTIFY

1. Verify pin with swivel handle and drilled hole at opposite end.
2. Measure diameter (A).
3. Measure effective length (C).
4. Find the part in the chart below.



PREFIX MATERIAL/FINISH

HPL = C1035-1045 STEEL, ZINC YELLOW WITH 12" CHAIN (T) AND LYNCH PIN
Material/finish combinations may not be available in all sizes.

ADDITIONAL SIZES AND FINISHES MAY BE AVAILABLE UPON REQUEST

ITEM NUMBER	(C) EFFECTIVE LENGTH	(B) SHANK LENGTH
3/8 (.375") (A) Outside Diameter .375/.365"		
(D) Hole Diameter: .156" (5/32) .166/.151" (E) Head Diameter: .690" .700/.680"		
HPL-0375-4000S	4.000" (4)	4.375" (4-3/8)
1/2 (.500") (A) Outside Diameter .500/.490"		
(D) Hole Diameter: .203" (13/64) .213/.198" (E) Head Diameter: .910" .920/.900"		
HPL-0500-4250S	4.250" (4-1/4)	5.000" (5)
5/8 (.625") (A) Outside Diameter .625/.615"		
(D) Hole Diameter: .203" (13/64) .213/.198" (E) Head Diameter: 1.080" 1.090/1.070"		
HPL-0625-4000S	4.000" (4)	4.750" (4-3/4)
HPL-0625-5000S	5.000" (5)	5.750" (5-3/4)
HPL-0625-5750S	5.750" (5-3/4)	6.500" (6-1/2)
HPL-0625-6000S	6.000" (6)	6.750" (6-3/4)
HPL-0625-6250S	6.250" (6-1/4)	7.000" (7)
3/4 (.750") (A) Outside Diameter .750/.740"		
(D) Hole Diameter: .203" (13/64) .213/.198" (E) Head Diameter: 1.270" 1.280/1.260"		
HPL-0750-4000S	4.000" (4)	4.750" (4-3/4)
HPL-0750-4250S	4.250" (4-1/4)	5.000" (5)
HPL-0750-5250S	5.250" (5-1/4)	6.000" (6)
HPL-0750-6250S	6.250" (6-1/4)	7.000" (7)
7/8 (.875") (A) Outside Diameter .875/.865"		
(D) Hole Diameter: .203" (13/64) .213/.198" (E) Head Diameter: 1.450" 1.460/1.440"		
HPL-0875-4250S	4.250" (4-1/4)	5.250" (5-1/4)
HPL-0875-6250S	6.250" (6-1/4)	7.250" (7-1/4)

ITEM NUMBER	(C) EFFECTIVE LENGTH	(B) SHANK LENGTH
HPL-0875-6500S	6.500" (6-1/2)	7.500" (7-1/2)
HPL-0875-7000S	7.000" (7)	8.000" (8)
1 (1.000") (A) Outside Diameter 1.000/.900"		
(D) Hole Diameter: .203" (13/64) .213/.198" (E) Head Diameter: 1.640" 1.650/1.630"		
HPL-1000-4750S	4.750" (4-3/4)	5.750" (5-3/4)
HPL-1000-6250S	6.250" (6-1/4)	7.250" (7-1/4)
HPL-1000-6750S	6.750" (6-3/4)	7.750" (7-3/4)
HPL-1000-7000S	7.000" (7)	8.000" (8)
1-1/8 (1.125") (A) Outside Diameter 1.125/1.115"		
(D) Hole Diameter: .250" (1/4) .260/.245" (E) Head Diameter: 1.810" 1.820/1.800"		
HPL-1125-6250S	6.250" (6-1/4)	7.000" (7)
HPL-1125-7000S	7.000" (7)	7.750" (7-3/4)
1-1/4 (1.250") (A) Outside Diameter 1.250/1.240"		
(D) Hole Diameter: .250" (1/4) .260/.245" (E) Head Diameter: 1.856" 1.866/1.846"		
HPL-1250-6250S	6.250" (6-1/4)	7.000" (7)
HPL-1250-7000S	7.000" (7)	7.750" (7-3/4)
1-3/8 (1.375") (A) Outside Diameter 1.375/1.365"		
(D) Hole Diameter: .250" (1/4) .260/.245" (E) Head Diameter: 2.500" (2-1/2) 2.510/2.490"		
HPL-1375-8000S	8.000" (8)	9.000" (9)
1-1/2 (1.500") (A) Outside Diameter 1.500/1.490"		
(D) Hole Diameter: .250" (1/4) .260/.245" (E) Head Diameter: 2.500" (2-1/2) 2.510/2.490"		
HPL-1500-8000S	8.000" (8)	9.000" (9)