



THREE-POINT PINS

HUYETT.COM • 785-392-3017

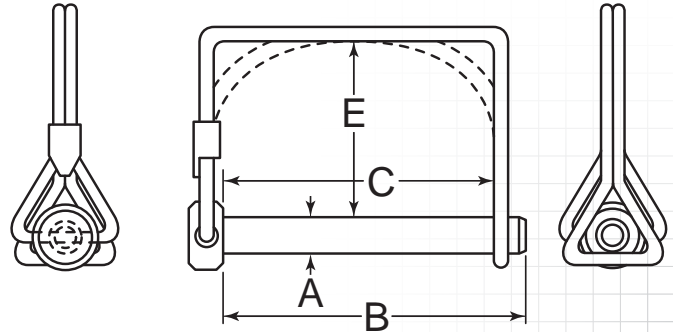
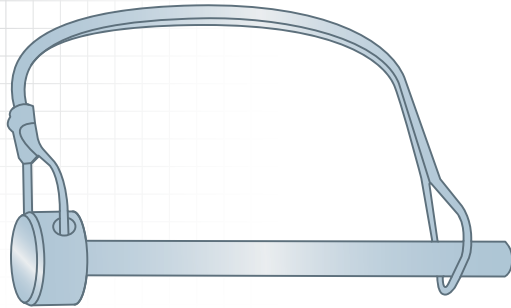
SNAP – DOUBLE-WIRE

DESCRIPTION

Double-wire snap pins are intended for heavier duty applications than single-wire snap pins; however, these pins should not be used in applications which subject the pin to lateral forces.

HOW TO IDENTIFY

1. Verify pin with attached round or square handle double-wire lock.
2. Measure diameter (A).
3. Measure effective length (C).
4. Find the part in the chart below.



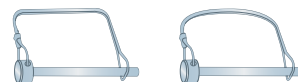
PREFIX MATERIAL/FINISH

- SNAP = LOW CARBON STEEL, ZINC CLEAR
 SNAPS = 300 SERIES STAINLESS STEEL, PASSIVATED
 SNAPY = LOW CARBON STEEL, ZINC YELLOW
- Material/finish combinations may not be available in all sizes.

ADDITIONAL SIZES AND FINISHES MAY BE AVAILABLE UPON REQUEST

ITEM NUMBER	(A) OUTSIDE DIAMETER .0021-.007"	(C) EFFECTIVE LENGTH .0001-.250"	(E) HEIGHT	(B) SHANK LENGTH
Round Handle				
PREFIX-250-1375R	.250" (1/4)	1.375" (1-3/8)	1.625" (1-5/8)	1.625" (1-5/8)
PREFIX-250-1750R	.250" (1/4)	1.750" (1-3/4)	1.625" (1-5/8)	2.000" (2)
PREFIX-250-2500R	.250" (1/4)	2.500" (2-1/2)	1.625" (1-5/8)	2.750" (2-3/4)
PREFIX-312-1375R	.313" (5/16)	1.375" (1-3/8)	1.750" (1-3/4)	1.625" (1-5/8)
PREFIX-312-1750R	.313" (5/16)	1.750" (1-3/4)	1.750" (1-3/4)	2.000" (2)
PREFIX-312-2250R	.313" (5/16)	2.250" (2-1/4)	1.750" (1-3/4)	2.500" (2-1/2)
PREFIX-312-2500R	.313" (5/16)	2.500" (2-1/2)	2.000" (2)	2.750" (2-3/4)
PREFIX-375-1375R	.375" (3/8)	1.375" (1-3/8)	1.500" (1-1/2)	1.625" (1-5/8)
PREFIX-375-1500R	.375" (3/8)	1.500" (1-1/2)	1.500" (1-1/2)	1.750" (1-3/4)
PREFIX-375-1750R	.375" (3/8)	1.750" (1-3/4)	1.500" (1-1/2)	2.000" (2)
PREFIX-375-2250R	.375" (3/8)	2.250" (2-1/4)	1.500" (1-1/2)	2.500" (2-1/2)
PREFIX-375-2500R	.375" (3/8)	2.500" (2-1/2)	1.500" (1-1/2)	2.750" (2-3/4)
Square Handle				
PREFIX-250-2250S	.250" (1/4)	2.250" (2-1/4)	1.625" (1-5/8)	2.500" (2-1/2)
PREFIX-250-2500S	.250" (1/4)	2.500" (2-1/2)	1.625" (1-5/8)	2.750" (2-3/4)
PREFIX-312-2250S	.313" (5/16)	2.250" (2-1/4)	1.750" (1-3/4)	2.500" (2-1/2)
PREFIX-312-2500S	.313" (5/16)	2.500" (2-1/2)	1.750" (1-3/4)	2.750" (2-3/4)
PREFIX-312-3000S	.313" (5/16)	3.000" (3)	1.750" (1-3/4)	3.250" (3-1/4)
PREFIX-375-2250S	.375" (3/8)	2.250" (2-1/4)	1.500" (1-1/2)	2.500" (2-1/2)
PREFIX-375-2500S	.375" (3/8)	2.500" (2-1/2)	1.500" (1-1/2)	2.750" (2-3/4)
PREFIX-375-3000S	.375" (3/8)	3.000" (3)	1.500" (1-1/2)	3.250" (3-1/4)

DOUBLE-WIRE SNAP PINS ARE AVAILABLE IN BOTH SQUARE AND ROUND HANDLE



FOR DETAILED SPECIFICATIONS AND TOLERANCES, VISIT HUYETT.COM.
 Prices, materials, dimensions, tolerances, designs, and grades subject to change without notice. © 2015 G.L. Huyett