



# THREE-POINT PINS

HUYETT.COM • 785-392-3017

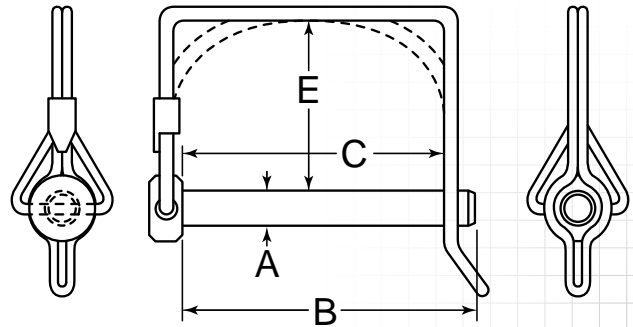
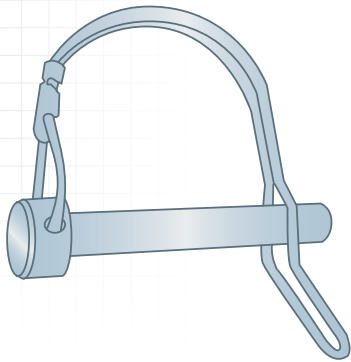
## TAB LOCK – DOUBLE-WIRE

### DESCRIPTION

Double-wire tab lock pins feature a double-wire folded into a tab handle sandwiching the pin and locking it in place. The tab handle facilitates quick and easy installation or removal.

### HOW TO IDENTIFY

1. Verify pin with attached round or square handle double-wire tab lock.
2. Measure diameter (A).
3. Measure effective length (C).
4. Find the part in the chart below.



### PREFIX MATERIAL/FINISH

- SNAT = LOW CARBON STEEL, ZINC CLEAR  
 SNATS = 300 SERIES STAINLESS STEEL, PASSIVATED  
 SNATY = LOW CARBON STEEL, ZINC YELLOW
- Material/finish combinations may not be available in all sizes.

ADDITIONAL SIZES AND FINISHES MAY BE AVAILABLE UPON REQUEST

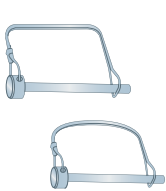
| ITEM NUMBER          | (A)<br>OUTSIDE DIAMETER<br>-.002/- .007" | (C)<br>EFFECTIVE LENGTH<br>+.125/- .125" | (E)<br>HEIGHT  | (B)<br>SHANK LENGTH |
|----------------------|--|--|----------------|---------------------|
| <b>Round Handle</b>  |  |  |                |                     |
| PREFIX-250-1750R     | .250" (1/4)                              | 1.750" (1-3/4)                           | 1.500" (1-1/2) | 2.000" (2)          |
| PREFIX-312-1750R     | .313" (5/16)                             | 1.750" (1-3/4)                           | 1.500" (1-1/2) | 2.000" (2)          |
| PREFIX-375-1750R     | .375" (3/8)                              | 1.750" (1-3/4)                           | 1.500" (1-1/2) | 2.000" (2)          |
| <b>Square Handle</b> |  |  |                |                     |
| PREFIX-375-2250S     | .375" (3/8)                              | 2.250" (2-1/4)                           | 1.500" (1-1/2) | 2.750" (2-3/4)      |

TO ORDER, REPLACE PREFIX WITH YOUR CHOICE:

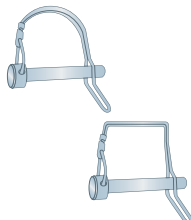
SNAT • SNATS • SNATY

IN STOCK ORDERS SHIP NEXT BUSINESS DAY

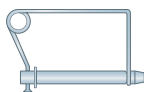
### THREE-POINT DESIGNS



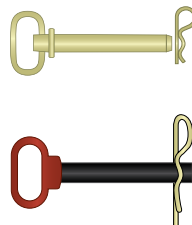
SNAP PIN  
Page 48



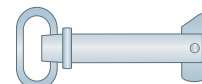
TAB LOCK  
Page 50



COIL TENSION  
Page 52



HITCH PIN  
Page 54



SWIVEL  
Page 60



LYNCH  
Page 61