

# THREE-POINT PINS

HUYETT.COM • 785-392-3017

BOX 232 • MINNEAPOLIS, KS • 67467  
SALES@HUYETT.COM • FAX 785-392-2845

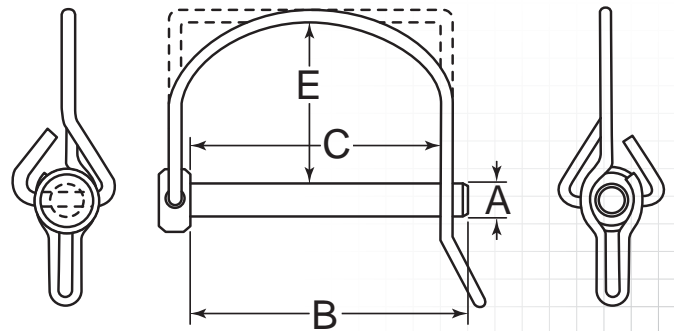
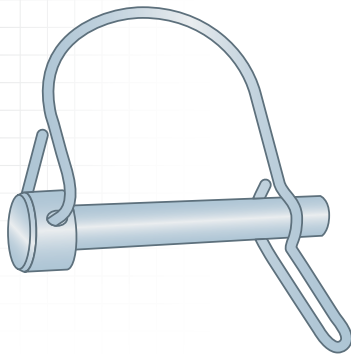
## TAB LOCK – SINGLE-WIRE

### DESCRIPTION

Single-wire tab lock pins provide a small cost savings compared to double-wire tab lock pins. The tab protrusion should be considered in application design and use.

### HOW TO IDENTIFY

1. Verify pin with attached round or square handle single-wire tab lock.
2. Measure diameter (A).
3. Measure effective length (C).
4. Find the part in the chart below.



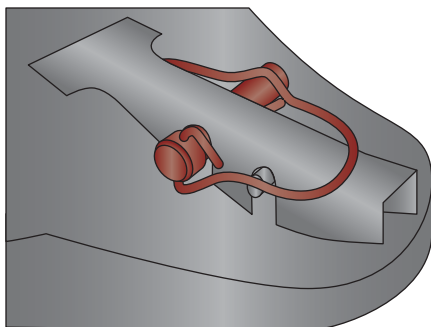
### PREFIX MATERIAL/FINISH

SNIT = LOW CARBON STEEL, ZINC CLEAR

ADDITIONAL SIZES AND FINISHES MAY BE AVAILABLE UPON REQUEST

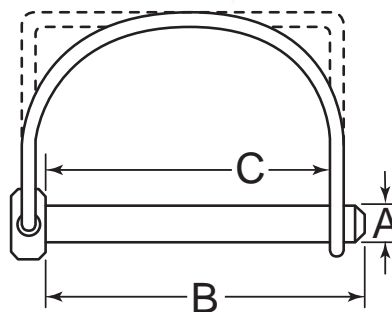
ITEM NUMBER	(A) OUTSIDE DIAMETER -.002/- .007"	(C) EFFECTIVE LENGTH +.125/- .125"	(E) HEIGHT	(B) SHANK LENGTH
<b>Round Handle</b>				
SNIT-250-1750R	.250" (1/4)	1.750" (1-3/4)	1.500" (1-1/2)	2.000" (2)
SNIT-312-1750R	.313" (5/16)	1.750" (1-3/4)	1.500" (1-1/2)	2.000" (2)
SNIT-375-1750R	.375" (3/8)	1.750" (1-3/4)	1.500" (1-1/2)	2.000" (2)
<b>Square Handle</b>				
SNIT-250-2500S	.250" (1/4)	2.500" (2-1/2)	1.500" (1-1/2)	2.750" (2-3/4)
SNIT-312-2500S	.313" (5/16)	2.500" (2-1/2)	1.500" (1-1/2)	2.750" (2-3/4)
SNIT-375-2500S	.375" (3/8)	2.500" (2-1/2)	1.500" (1-1/2)	2.750" (2-3/4)

### APPLICATION




SECURES A TRAILER LATCH MECHANISM

### MEASUREMENT



Pins in this category are measured by the shank diameter (A) and effective length (C), not the shank length (B).

 SINGLE-WIRE AND DOUBLE WIRE TAB LOCK PINS ARE AVAILABLE IN BOTH SQUARE AND ROUND HANDLE

