



SPRING PINS

HUYETT.COM • 785-392-3017

ASME B18.8.4M TYPE B

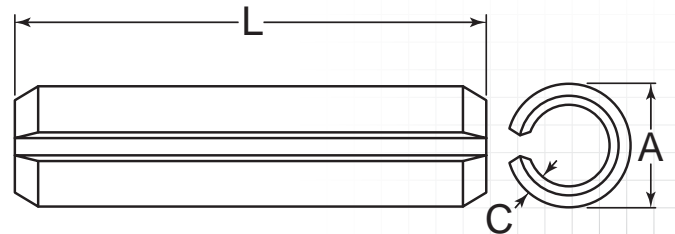
SLOTTED – METRIC

DESCRIPTION

A single-turn rolled pin, formed with one straight parallel slot. Slotted pins are economical and save time because they can be installed in a single operation. The hollow design and slot give them their unique self-locking capabilities.

HOW TO IDENTIFY

1. Verify single-turn roll with parallel slot.
2. Measure diameter (A).
3. Measure length (L).
4. Find the part in the chart below.



PREFIX MATERIAL/FINISH

ASME B18.1.4M Type B identified by “-A” at end of item number.

SPM = HIGH CARBON STEEL, PLAIN*
SPMP = HIGH CARBON STEEL, PHOSPHATE
SPMZ = HIGH CARBON STEEL, ZINC CLEAR

SPM3P = 302/304 STAINLESS STEEL, PASSIVATED
SPM6P = 420 STAINLESS STEEL, PASSIVATED
 Material/finish combinations may not be available in all sizes.

ITEM NUMBER	(L) OVERALL LENGTH
1.50 mm (A) Outside Diameter: +0.16/+0.08 mm	
(C) Wall Thickness: 0.35 mm Recommended Hole Diameter: 1.50-1.56 mm	
	+0.40/-0.40 mm
PREFIX-015-004-A	4.00 mm
PREFIX-015-005-A	5.00 mm
PREFIX-015-006-A	6.00 mm
PREFIX-015-008-A	8.00 mm
PREFIX-015-010-A	10.00 mm
PREFIX-015-012-A	12.00 mm
PREFIX-015-014-A	14.00 mm
PREFIX-015-016-A	16.00 mm
PREFIX-015-018-A	18.00 mm
PREFIX-015-020-A	20.00 mm
PREFIX-015-022-A	22.00 mm
PREFIX-015-024-A	24.00 mm
	+0.50/-0.50 mm
PREFIX-015-026-A	26.00 mm
PREFIX-015-028-A	28.00 mm
PREFIX-015-030-A	30.00 mm

ITEM NUMBER	(L) OVERALL LENGTH
2.00 mm (A) Outside Diameter: +0.19/+0.10 mm	
(C) Wall Thickness: 0.45 mm Recommended Hole Diameter: 2.00-2.07 mm	
	+0.40/-0.40 mm
PREFIX-020-004-A	4.00 mm
PREFIX-020-005-A	5.00 mm
PREFIX-020-006-A	6.00 mm
PREFIX-020-008-A	8.00 mm
PREFIX-020-010-A	10.00 mm
PREFIX-020-012-A	12.00 mm
PREFIX-020-014-A	14.00 mm
PREFIX-020-016-A	16.00 mm
PREFIX-020-018-A	18.00 mm
PREFIX-020-020-A	20.00 mm
PREFIX-020-022-A	22.00 mm
PREFIX-020-024-A	24.00 mm
	+0.50/-0.50 mm
PREFIX-020-026-A	26.00 mm
PREFIX-020-028-A	28.00 mm
PREFIX-020-030-A	30.00 mm
PREFIX-020-032-A	32.00 mm
PREFIX-020-035-A	35.00 mm

ITEM NUMBER	(L) OVERALL LENGTH
PREFIX-020-040-A	40.00 mm
PREFIX-020-045-A	45.00 mm
2.50 mm (A) Outside Diameter: +0.22/+0.12 mm	
(C) Wall Thickness: 0.55 mm Recommended Hole Diameter: 2.50-2.58 mm	
	+0.40/-0.40 mm
PREFIX-025-005-A	5.00 mm
PREFIX-025-006-A	6.00 mm
PREFIX-025-008-A	8.00 mm
PREFIX-025-010-A	10.00 mm
PREFIX-025-012-A	12.00 mm
PREFIX-025-014-A	14.00 mm
PREFIX-025-016-A	16.00 mm
PREFIX-025-018-A	18.00 mm
PREFIX-025-020-A	20.00 mm
PREFIX-025-022-A	22.00 mm
PREFIX-025-024-A	24.00 mm
	+0.50/-0.50 mm
PREFIX-025-026-A	26.00 mm
PREFIX-025-028-A	28.00 mm
PREFIX-025-030-A	30.00 mm
PREFIX-025-032-A	32.00 mm

FOR DETAILED SPECIFICATIONS AND TOLERANCES, VISIT HUYETT.COM.

Prices, materials, dimensions, tolerances, designs, and grades subject to change without notice. © 2015 G.L. Huyett

*Limited warranty for surface finish: 30 days from date of shipment. See page 8 for details.

SPRING PINS

HUYETT.COM • 785-392-3017

BOX 232 • MINNEAPOLIS, KS • 67467
SALES@HUYETT.COM • FAX 785-392-2845

SLOTTED – METRIC

ASME B18.8.4M TYPE B

ITEM NUMBER	(L) OVERALL LENGTH
-------------	-----------------------

2.50 mm

(A) Outside Diameter: +0.22/+0.12 mm

(C) Wall Thickness: 0.55 mm
Recommended Hole Diameter: 2.50-2.58 mm

	+0.50/-0.50 mm
PREFIX-025-035-A	35.00 mm
PREFIX-025-040-A	40.00 mm
PREFIX-025-045-A	45.00 mm

3.00 mm

(A) Outside Diameter: +0.25/+0.14 mm

(C) Wall Thickness: 0.65 mm
Recommended Hole Diameter: 3.00-3.10 mm

	+0.40/-0.40 mm
PREFIX-030-005-A	5.00 mm
PREFIX-030-006-A	6.00 mm
PREFIX-030-008-A	8.00 mm
PREFIX-030-010-A	10.00 mm
PREFIX-030-012-A	12.00 mm
PREFIX-030-014-A	14.00 mm
PREFIX-030-016-A	16.00 mm
PREFIX-030-018-A	18.00 mm
PREFIX-030-020-A	20.00 mm
PREFIX-030-022-A	22.00 mm
PREFIX-030-024-A	24.00 mm
	+0.50/-0.50 mm
PREFIX-030-026-A	26.00 mm
PREFIX-030-028-A	28.00 mm
PREFIX-030-030-A	30.00 mm
PREFIX-030-032-A	32.00 mm
PREFIX-030-035-A	35.00 mm
PREFIX-030-040-A	40.00 mm
PREFIX-030-045-A	45.00 mm
PREFIX-030-050-A	50.00 mm
	+0.60/-0.60 mm
PREFIX-030-055-A	55.00 mm

4.00 mm

(A) Outside Diameter: +0.30/+0.16 mm

(C) Wall Thickness: 0.80 mm
Recommended Hole Diameter: 4.00-4.12 mm

	+0.40/-0.40 mm
PREFIX-040-008-A	8.00 mm
PREFIX-040-010-A	10.00 mm
PREFIX-040-012-A	12.00 mm
PREFIX-040-014-A	14.00 mm
PREFIX-040-016-A	16.00 mm
PREFIX-040-018-A	18.00 mm
PREFIX-040-020-A	20.00 mm
PREFIX-040-022-A	22.00 mm
PREFIX-040-024-A	24.00 mm

ITEM NUMBER	(L) OVERALL LENGTH
-------------	-----------------------

+0.50/-0.50 mm

PREFIX-040-026-A	26.00 mm
PREFIX-040-028-A	28.00 mm
PREFIX-040-030-A	30.00 mm
PREFIX-040-032-A	32.00 mm
PREFIX-040-035-A	35.00 mm
PREFIX-040-040-A	40.00 mm
PREFIX-040-045-A	45.00 mm
PREFIX-040-050-A	50.00 mm

+0.60/-0.60 mm

PREFIX-040-055-A	55.00 mm
PREFIX-040-060-A	60.00 mm
PREFIX-040-065-A	65.00 mm
PREFIX-040-070-A	70.00 mm
PREFIX-040-075-A	75.00 mm

5.00 mm

(A) Outside Diameter: +0.33/+0.17 mm

(C) Wall Thickness: 1.00 mm
Recommended Hole Diameter: 5.00-5.12 mm

	+0.40/-0.40 mm
PREFIX-050-010-A	10.00 mm
PREFIX-050-012-A	12.00 mm
PREFIX-050-014-A	14.00 mm
PREFIX-050-016-A	16.00 mm
PREFIX-050-018-A	18.00 mm
PREFIX-050-020-A	20.00 mm
PREFIX-050-022-A	22.00 mm
PREFIX-050-024-A	24.00 mm
	+0.50/-0.50 mm
PREFIX-050-026-A	26.00 mm
PREFIX-050-028-A	28.00 mm
PREFIX-050-030-A	30.00 mm
PREFIX-050-032-A	32.00 mm
PREFIX-050-035-A	35.00 mm
PREFIX-050-036-A	36.00 mm
PREFIX-050-040-A	40.00 mm
PREFIX-050-045-A	45.00 mm
PREFIX-050-050-A	50.00 mm
	+0.60/-0.60 mm
PREFIX-050-055-A	55.00 mm
PREFIX-050-060-A	60.00 mm
PREFIX-050-065-A	65.00 mm
PREFIX-050-070-A	70.00 mm
PREFIX-050-075-A	75.00 mm
	+0.75/-0.75 mm
PREFIX-050-080-A	80.00 mm
PREFIX-050-085-A	85.00 mm

ITEM NUMBER	(L) OVERALL LENGTH
-------------	-----------------------

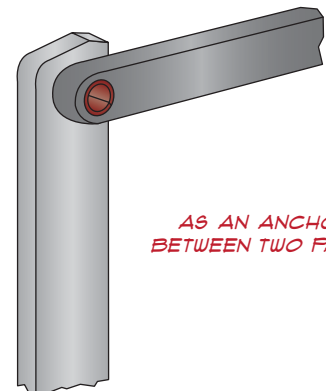
6.00 mm

(A) Outside Diameter: +0.36/+0.18 mm

(C) Wall Thickness: 1.20 mm
Recommended Hole Diameter: 6.00-6.12 mm

	+0.40/-0.40 mm
PREFIX-060-012-A	12.00 mm
PREFIX-060-014-A	14.00 mm
PREFIX-060-016-A	16.00 mm
PREFIX-060-018-A	18.00 mm
PREFIX-060-020-A	20.00 mm
PREFIX-060-022-A	22.00 mm
PREFIX-060-024-A	24.00 mm
	+0.50/-0.50 mm
PREFIX-060-026-A	26.00 mm
PREFIX-060-028-A	28.00 mm
PREFIX-060-030-A	30.00 mm
PREFIX-060-032-A	32.00 mm
PREFIX-060-035-A	35.00 mm
PREFIX-060-036-A	36.00 mm
PREFIX-060-040-A	40.00 mm
PREFIX-060-045-A	45.00 mm
PREFIX-060-050-A	50.00 mm
	+0.60/-0.60 mm
PREFIX-060-055-A	55.00 mm
PREFIX-060-060-A	60.00 mm
PREFIX-060-065-A	65.00 mm
PREFIX-060-070-A	70.00 mm
PREFIX-060-075-A	75.00 mm
	+0.75/-0.75 mm
PREFIX-060-080-A	80.00 mm
PREFIX-060-085-A	85.00 mm
PREFIX-060-090-A	90.00 mm
PREFIX-060-095-A	95.00 mm
PREFIX-060-100-A	100.00 mm
PREFIX-060-120-A	120.00 mm

APPLICATION



AS AN ANCHOR
BETWEEN TWO PARTS

FOR DETAILED SPECIFICATIONS AND TOLERANCES, VISIT HUYETT.COM.

Prices, materials, dimensions, tolerances, designs, and grades subject to change without notice. © 2015 G.L. Huyett

*Limited warranty for surface finish: 30 days from date of shipment. See page 8 for details.



ASME B18.8.4M TYPE B

SLOTTED – METRIC

PREFIX MATERIAL/FINISH

ASME B18.1.4M Type B identified by “-A” at end of item number.

- SPM** = HIGH CARBON STEEL, PLAIN*
- SPMP** = HIGH CARBON STEEL, PHOSPHATE
- SPMZ** = HIGH CARBON STEEL, ZINC CLEAR

- SPM3P** = 302/304 STAINLESS STEEL, PASSIVATED
 - SPM5P** = 420 STAINLESS STEEL, PASSIVATED
- Material/finish combinations may not be available in all sizes.

ITEM NUMBER	(L) OVERALL LENGTH
-------------	-----------------------

8.00 mm

(A) Outside Diameter: +0.45/+0.22 mm

(C) Wall Thickness: 1.60 mm
Recommended Hole Diameter: 8.00-8.15 mm

	+0.40/-0.40 mm
PREFIX-080-016-A	16.00 mm
PREFIX-080-018-A	18.00 mm
PREFIX-080-020-A	20.00 mm
PREFIX-080-022-A	22.00 mm
PREFIX-080-024-A	24.00 mm
	+0.50/-0.50 mm
PREFIX-080-026-A	26.00 mm
PREFIX-080-028-A	28.00 mm
PREFIX-080-030-A	30.00 mm
PREFIX-080-032-A	32.00 mm
PREFIX-080-035-A	35.00 mm
PREFIX-080-040-A	40.00 mm
PREFIX-080-045-A	45.00 mm
PREFIX-080-050-A	50.00 mm
	+0.60/-0.60 mm
PREFIX-080-055-A	55.00 mm
PREFIX-080-060-A	60.00 mm
PREFIX-080-065-A	65.00 mm
PREFIX-080-070-A	70.00 mm
PREFIX-080-075-A	75.00 mm
	+0.75/-0.75 mm
PREFIX-080-080-A	80.00 mm
PREFIX-080-085-A	85.00 mm
PREFIX-080-090-A	90.00 mm
PREFIX-080-095-A	95.00 mm
PREFIX-080-100-A	100.00 mm
PREFIX-080-120-A	120.00 mm

10.00 mm

(A) Outside Diameter: +0.51/+0.25 mm

(C) Wall Thickness: 2.00 mm
Recommended Hole Diameter: 10.00-10.15 mm

	+0.40/-0.40 mm
PREFIX-100-020-A	20.00 mm
PREFIX-100-022-A	22.00 mm
PREFIX-100-024-A	24.00 mm
	+0.50/-0.50 mm
PREFIX-100-026-A	26.00 mm
PREFIX-100-028-A	28.00 mm

ITEM NUMBER	(L) OVERALL LENGTH
-------------	-----------------------

PREFIX-100-030-A	30.00 mm
PREFIX-100-032-A	32.00 mm
PREFIX-100-035-A	35.00 mm
PREFIX-100-040-A	40.00 mm
PREFIX-100-045-A	45.00 mm
PREFIX-100-050-A	50.00 mm
	+0.60/-0.60 mm
PREFIX-100-055-A	55.00 mm
PREFIX-100-060-A	60.00 mm
PREFIX-100-065-A	65.00 mm
PREFIX-100-070-A	70.00 mm
PREFIX-100-075-A	75.00 mm
	+0.75/-0.75 mm
PREFIX-100-080-A	80.00 mm
PREFIX-100-085-A	85.00 mm
PREFIX-100-090-A	90.00 mm
PREFIX-100-095-A	95.00 mm
PREFIX-100-100-A	100.00 mm
PREFIX-100-120-A	120.00 mm
PREFIX-100-140-A	140.00 mm
PREFIX-100-160-A	160.00 mm

12.00 mm

(A) Outside Diameter: +0.55/+0.28 mm

(C) Wall Thickness: 2.50 mm
Recommended Hole Diameter: 12.00-12.18 mm

	+0.40/-0.40 mm
PREFIX-120-022-A	22.00 mm
PREFIX-120-024-A	24.00 mm
	+0.50/-0.50 mm
PREFIX-120-026-A	26.00 mm
PREFIX-120-028-A	28.00 mm
PREFIX-120-030-A	30.00 mm
PREFIX-120-032-A	32.00 mm
PREFIX-120-035-A	35.00 mm
PREFIX-120-040-A	40.00 mm
PREFIX-120-045-A	45.00 mm
PREFIX-120-050-A	50.00 mm
	+0.60/-0.60 mm
PREFIX-120-055-A	55.00 mm
PREFIX-120-060-A	60.00 mm
PREFIX-120-065-A	65.00 mm
PREFIX-120-070-A	70.00 mm
PREFIX-120-075-A	75.00 mm

ITEM NUMBER	(L) OVERALL LENGTH
-------------	-----------------------

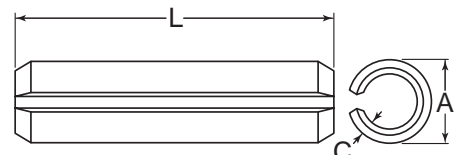
	+0.75/-0.75 mm
PREFIX-120-080-A	80.00 mm
PREFIX-120-085-A	85.00 mm
PREFIX-120-090-A	90.00 mm
PREFIX-120-095-A	95.00 mm
PREFIX-120-100-A	100.00 mm
PREFIX-120-120-A	120.00 mm
PREFIX-120-140-A	140.00 mm
PREFIX-120-160-A	160.00 mm
PREFIX-120-180-A	180.00 mm

14.00 mm

(A) Outside Diameter: +0.60/+0.30 mm

(C) Wall Thickness: 3.00 mm
Recommended Hole Diameter: 14.00-14.18 mm

	+0.50/-0.50 mm
PREFIX-140-030-A	30.00 mm
PREFIX-140-032-A	32.00 mm
PREFIX-140-035-A	35.00 mm
PREFIX-140-040-A	40.00 mm
PREFIX-140-045-A	45.00 mm
PREFIX-140-050-A	50.00 mm
	+0.60/-0.60 mm
PREFIX-140-055-A	55.00 mm
PREFIX-140-060-A	60.00 mm
PREFIX-140-065-A	65.00 mm
PREFIX-140-070-A	70.00 mm
PREFIX-140-075-A	75.00 mm
	+0.75/-0.75 mm
PREFIX-140-080-A	80.00 mm
PREFIX-140-085-A	85.00 mm
PREFIX-140-090-A	90.00 mm
PREFIX-140-095-A	95.00 mm
PREFIX-140-100-A	100.00 mm
PREFIX-140-120-A	120.00 mm
PREFIX-140-140-A	140.00 mm
PREFIX-140-160-A	160.00 mm
PREFIX-140-180-A	180.00 mm
PREFIX-140-200-A	200.00 mm



FOR DETAILED SPECIFICATIONS AND TOLERANCES, VISIT HUYETT.COM.

Prices, materials, dimensions, tolerances, designs, and grades subject to change without notice. © 2015 G.L. Huyett

*Limited warranty for surface finish: 30 days from date of shipment. See page 8 for details.

SPRING PINS

HUYETT.COM • 785-392-3017

BOX 232 • MINNEAPOLIS, KS • 67467
SALES@HUYETT.COM • FAX 785-392-2845

SLOTTED – METRIC

ASME B18.8.4M TYPE B

ITEM NUMBER	(L) OVERALL LENGTH
-------------	-----------------------

ITEM NUMBER	(L) OVERALL LENGTH
-------------	-----------------------

ITEM NUMBER	(L) OVERALL LENGTH
-------------	-----------------------

16.00 mm	
(A) Outside Diameter: +0.65/+0.32 mm	
(C) Wall Thickness: 3.00 mm Recommended Hole Diameter: 16.00-16.18 mm	
	+0.50/-0.50 mm
PREFIX-160-032-A	32.00 mm
PREFIX-160-035-A	35.00 mm
PREFIX-160-040-A	40.00 mm
PREFIX-160-045-A	45.00 mm
PREFIX-160-050-A	50.00 mm
	+0.60/-0.60 mm
PREFIX-160-055-A	55.00 mm
PREFIX-160-060-A	60.00 mm
PREFIX-160-065-A	65.00 mm
PREFIX-160-070-A	70.00 mm
PREFIX-160-075-A	75.00 mm
	+0.75/-0.75 mm
PREFIX-160-080-A	80.00 mm
PREFIX-160-085-A	85.00 mm
PREFIX-160-090-A	90.00 mm
PREFIX-160-095-A	95.00 mm
PREFIX-160-100-A	100.00 mm
PREFIX-160-120-A	120.00 mm
PREFIX-160-140-A	140.00 mm
PREFIX-160-160-A	160.00 mm
PREFIX-160-180-A	180.00 mm
PREFIX-160-200-A	200.00 mm

18.00 mm	
(A) Outside Diameter: +0.71/+0.35 mm	
(C) Wall Thickness: 3.50 mm Recommended Hole Diameter: 18.00-18.18 mm	
	+0.50/-0.50 mm
PREFIX-180-035-A	35.00 mm
PREFIX-180-040-A	40.00 mm
PREFIX-180-045-A	45.00 mm
PREFIX-180-050-A	50.00 mm
	+0.60/-0.60 mm
PREFIX-180-055-A	55.00 mm
PREFIX-180-060-A	60.00 mm
PREFIX-180-065-A	65.00 mm
PREFIX-180-070-A	70.00 mm
PREFIX-180-075-A	75.00 mm
	+0.75/-0.75 mm
PREFIX-180-080-A	80.00 mm
PREFIX-180-085-A	85.00 mm
PREFIX-180-090-A	90.00 mm
PREFIX-180-095-A	95.00 mm
PREFIX-180-100-A	100.00 mm
PREFIX-180-120-A	120.00 mm
PREFIX-180-140-A	140.00 mm
PREFIX-180-160-A	160.00 mm
PREFIX-180-180-A	180.00 mm
PREFIX-180-200-A	200.00 mm

20.00 mm	
(A) Outside Diameter: +0.80/+0.40 mm	
(C) Wall Thickness: 4.00 mm Recommended Hole Diameter: 20.00-20.21 mm	
	+0.50/-0.50 mm
PREFIX-200-035-A	35.00 mm
PREFIX-200-040-A	40.00 mm
PREFIX-200-045-A	45.00 mm
PREFIX-200-050-A	50.00 mm
	+0.60/-0.60 mm
PREFIX-200-055-A	55.00 mm
PREFIX-200-060-A	60.00 mm
PREFIX-200-065-A	65.00 mm
PREFIX-200-070-A	70.00 mm
PREFIX-200-075-A	75.00 mm
	+0.75/-0.75 mm
PREFIX-200-080-A	80.00 mm
PREFIX-200-085-A	85.00 mm
PREFIX-200-090-A	90.00 mm
PREFIX-200-095-A	95.00 mm
PREFIX-200-100-A	100.00 mm
PREFIX-200-120-A	120.00 mm
PREFIX-200-140-A	140.00 mm
PREFIX-200-160-A	160.00 mm
PREFIX-200-180-A	180.00 mm
PREFIX-200-200-A	200.00 mm

ASME B18.8.4M VS. ISO 8752

SHEAR STRENGTH

NOMINAL DIAMETER	ISO KN	ASME KN
1.5 MM	1.58	1.8
2 MM	2.82	3.5
2.5 MM	4.38	5.5
3 MM	6.32	7.8
4 MM	11.24	12.3
5 MM	17.54	19.6
6 MM	26.04	28.5
8 MM	42.76	48.8
10 MM	70.16	79.1
12 MM	104.1	111.6
14 MM	144.7	170.0
16 MM	171.0	190.0
18 MM	222.5	250.0
20 MM	280.6	320.0

RECOMMENDED HOLES

NOMINAL DIAMETER	ISO	ASME
1.5 MM	1.50/1.60	1.50/1.56
2 MM	2.00/2.10	2.00/2.07
2.5 MM	2.50/2.65	2.50/2.58
3 MM & UP	No Difference	

EXPANDED DIAMETER

ASME slotted spring pins have a smaller expanded or free diameter relative to the nominal hole.

STRAIGHTNESS

ASME specifies a straightness requirement.

MATERIAL

ASME includes Beryllium Copper.

LENGTH TOLERANCE

PIN LENGTH	ISO	ASME
4 – 10 MM	+0.25/-0.25 mm	+0.40/-0.40 mm
12 – 24 MM	+0.50/-0.50 mm	+0.40/-0.40 mm
26 – 50 MM	+0.50/-0.50 mm	+0.50/-0.50 mm
55 – 75 MM	+0.75/-0.75 mm	+0.60/-0.60 mm
80 – 100 MM	+0.75/-0.75 mm	+0.75/-0.75 mm

SHEAR STRENGTH

ASME specifies a minimum double shear strength for austenitic stainless steel.

HARDNESS

The ASME specification for carbon steel is higher to maximize tensile strength. For chrome stainless steel it is slightly lower to avoid the risk of brittleness.

FOR DETAILED SPECIFICATIONS AND TOLERANCES, VISIT HUYETT.COM.

Prices, materials, dimensions, tolerances, designs, and grades subject to change without notice. © 2015 G.L. Huyett

*Limited warranty for surface finish: 30 days from date of shipment. See page 8 for details.